



**Partner  
your brand  
with Nike**

**FOR  
EVERYDAY<sup>ooo</sup>**

Rory McIlroy

available @  
**REIMISE.COM**

# VICTORY POLOS

**Technical golf gear that looks stylish enough for wearing off the course...**



**NK263**

## **NK263**

### **Victory polo solid**

- Nike Dry fabric helps you stay dry and comfortable
- Rolled-forward shoulder seams allow natural range of motion
- Collar is ribbed to help prevent curling

F 100% Polyester

W 170gsm

**S** 35/37.5" **M** 37.5/41" **L** 41/44" **XL** 44/48.5"  
**2XL** 48.5/53.5"

**Smart styling and technical dry fabric keeps you fresh and looking good**



**NK264**

**Drop-tail hem provides extra coverage**

## **NK264**

### **Women's victory polo**

- Nike Dry fabric helps you stay dry and comfortable
- Drop-tail hem provides extra coverage
- 3-button placket provides a customizable fit

F 100% Polyester

W 170gsm

**XS** 4/6 **S** 8/10 **M** 12/14 **L** 16/18 **XL** 20/22



Black/  
Silver



Game  
Royal/  
White



Tropical  
Pink/  
White



University  
Red/  
White



White/  
Silver



## **DRI-FIT**



### **WHAT IS DRI-FIT?**

A high-performance, microfibre, polyester fabric with properties and build quality to wick sweat away from your body and move it to the surface of the fabric, where it evaporates.

***NK263 available in the following colours:***

University Blue/Black

Game Royal/Black

College Navy/Black

University Red/Black

Dark Grey/Black

White/Cool Grey

Black/Cool Grey



# FOR EVERY DAY

Hi-tech designed fabrics that are also styled for active sport and everyday use



NK262

**Regular fit provides a relaxed, comfortable feel**

### NK262 available in the following colours:



### NK262 Victory polo stripe

- Ribbed collar, rolled-forward shoulder seams
- Nike Dry fabric helps you stay dry, comfortable and focused
- Regular fit provides a relaxed, comfortable feel

F 100% Polyester  
 W 170gsm  
 S 35/37.5" M 37.5/41" L 41/44" XL 44/48.5"  
 2XL 48.5/53.5"



NK257



NK261

DRI-FIT

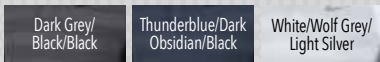


### NK257 Zonal cooling polo

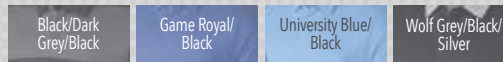
- Zonal cooling technology incorporates targeted ventilation to enhance cooling
- Slim fit contours your body without inhibiting motion
- Blade collar style lays smoothly against your neck

F 100% Polyester  
 W 135gsm  
 S 35/37.5" M 37.5/41" L 41/44" XL 44/48.5"  
 2XL 48.5/53.5"

### NK257 available in the following colours:



### NK261 available in the following colours:



### NK261 Colourblock polo

- Nike Dry fabric helps you stay dry and comfortable
- Regular fit provides a relaxed, comfortable feel
- Circular-knit construction creates a 'dots and stripes' pattern

F 87% Polyester, 13% Spandex  
 W 184gsm  
 S 35/37.5" M 37.5/41" L 41/44" XL 44/48.5"  
 2XL 48.5/53.5"



NK260



NK208

BREATHE

DRI-FIT



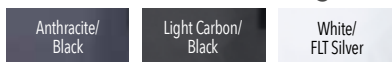
**Three-button placket for classic polo style**

### NK260 Breathe polo

- Nike Breathe fabric helps you stay dry and cool
- Regular fit provides a relaxed, comfortable feel
- Circular-knit construction creates a 'dots and stripes' pattern

F 100% Polyester  
 W 145gsm  
 S 35/37.5" M 37.5/41" L 41/44" XL 44/48.5"  
 2XL 48.5/53.5"

### NK260 available in the following colours:



### NK208 available in the following colours:



### NK208 Breathe colour block polo

- Dri-FIT technology
- Double-knit fabric for a soft feel
- Standard fit for a relaxed feel

F 100% Polyester  
 S 38" M 41" L 44" XL 47" 2XL 50"

# THE SCIENCE BEHIND THE SWEAT

**DRI-FIT**



**Dri-Fit technology provides sweat-wicking power to keep you dry and comfortable**

**NK259**

**DISTRACTION-FREE COLLAR**

**MODERN FIT  
DESIGNED TO  
CONTOUR THE  
BODY WITHOUT  
INHIBITING  
MOTION**

**CIRCULAR-KNIT  
CONSTRUCTION  
CREATES A 'DOTS AND  
STRIPES' PATTERN**

**RAGLAN SLEEVES  
ALLOW YOU TO MOVE  
NATURALLY THROUGH  
YOUR SWING**



## **NK259**

**Seamless knit 1/2 zip long sleeve cover up**

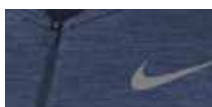
- Nike Dry fabric helps you stay dry, comfortable and focused
- Nearly seamless construction for distraction-free movement
- Raglan sleeves allow you to move naturally through your swing

F 63% Polyester, 37% Nylon

W 199gsm

**S** 35/37.5" **M** 37.5/41" **L** 41/44" **XL** 44/48.5"  
**2XL** 48.5/53.5"

**NK259**  
**available in the following colours:**



Light Carbon/Thunderblue/  
Black/Black



Wolf Grey/  
Black/Black/Black



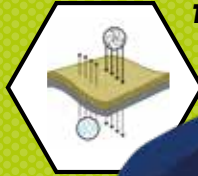
# GOLF TECH

**Contoured fitting for comfortable and focused play**

**NK265**



**Therma fabric for warmth and moisture control**



**NK266**



**NK265**

**Half-zip dry top HZ core**

- Nike Dry fabric helps you stay dry, comfortable and focused
- Regular fit provides a relaxed, comfortable feel
- Half-zip design provides easy on and off

F 100% Polyester

M 235gsm

S 35/37.5" M 37.5/41" L 41/44" XL 44/48.5" 2XL 48.5/53.5"

**NK266**

**Therma-fit half-zip top**

- Nike Therma fabric helps keep you warm
- Water-repellent finish helps keep you dry
- 2-way stretch allows natural range of motion

F 100% Polyester

M 220gsm

S 35/37.5" M 37.5/41" L 41/44" XL 44/48.5" 2XL 48.5/53.5"

**NK265 available in the following colours:**

Black/White/White

College Navy/Anthracite/Black

Dark Grey/Anthracite/Black

University Red/Anthracite/Black

**NK266 available in the following colours:**

Black/Black/Heather/White

College Navy/Dark Grey/Heather/White

University Red/Dark Grey/Heather/White

Wolf Grey/Wolf Grey/Heather/Black



Embroidered logo above rear pocket

**NK209**



**Modern fit for on and off the course style**

**NK253**



**NK209**

**Modern fit trouser**

- Dri-FIT technology
- Modern contoured fit
- Back welt pockets for small item storage

F 95% Polyester, 5% Spandex

30\*\* 32\* 34\* 36\* 38\*

Leg Length - Short 30", Regular 32"

\*30" not available in short



Black/Black

Midnight Navy/Midnight Navy

**DRI-FIT**



**DRI-FIT**



**NK267**



**Stylish tech cap protects and looks great**

**Storm-FIT rainsuit**

*keeps you dry and incredibly comfortable from the inside out*

**NK267**

**Tech cap**

- Dri-FIT technology helps keep you dry and comfortable
- Soft hook-and-loop closure lets you adjust your fit
- Embroidered eyelets help enhance breathability

F 100% Polyester

M 110gsm

One size

**NK253**

**Storm-FIT rainsuit**

- Waterproof, breathable suit
- Fully lined and taped
- Zip pockets on both pants and jacket

F 100% Polyester warp knit

S 38" M 41" L 44" XL 47" 2XL 50"



Black

**NK267 available in the following colours:**

Black/Anthracite/White

College Navy/Anthracite/White

Dark Grey/Anthracite/Black

University Red/Anthracite/Black

White/Anthracite/Black



# ORGANISE YOUR SPORT

## FOLD-OVER BACKPACK

With separate, zipped shoe compartment, keeps dirty footwear away from your gear

**NK300 available in the following colours:**



Black/Silver



Silver/Black/Gym Red



Thunderblue/Black

## LARGER STORAGE DUFFLE SPORTS BAG

Perfect for a larger kit, or weekends away and designed with the latest fashion style

**NK301 available in the following colours:**



Black/Silver



Thunderblue/Black



### NK300

#### Sport backpack

- Fold-over top with buckle closure
- Multiple accessory pockets
- Zipped shoe compartment for specialized storage

F 100% Polyester

W 760g

Dimensions 16.5" x 6.2" x 19.6"

One size

### NK301

#### Sport III duffel bag

- Lightweight and durable construction
- Separate shoe storage
- Additional accessory pockets

F 100% Polyester

W 760g

Dimensions 19.2" x 10.2" x 11"

One size

### NK302

#### Sport III shoe tote

- Lightweight and durable construction
- Mesh ventilation panels
- Designed for easy creasing compatibility

F 100% Polyester

W 170g

Dimensions 14.1" x 7.4" x 5.9"

One size

### NK303

#### Sport III gym sack

- Designed for easy creasing compatibility
- Front zippered pocket
- Lightweight, multi-purpose and durable construction

F 100% Polyester

W 280g

Dimensions 14.1" x 0.4" x 17.7"

One size

## SHOE STORAGE

When you need to keep your footwear away from the main bag - or just a convenient carry bag

**NK302 available in the following colours:**



Black/Silver



Silver/Black/Gym Red

**NK302**



## LIGHTWEIGHT GYM SACK

Front mesh zipped pocket for keeping valuables safe and easy to find

**NK303 available in the following colours:**



Black/Silver



Silver/Black/Gym Red



Thunderblue/Black

**NK303**



# DEPARTURE III

## PREMIUM LUGGAGE

**Versatile luggage options for secure, organised storage while travelling**

### NK270

#### Departure III roller

- Durable twill polyester external water-resistant fleece-lined valuables pocket
- 3 handles for ease of use with telescoping handle
- Large main compartment with lockable zipper, internal zipper compartments for organisation

F 75% Polyester, 23% Polyurethane, 2% Aluminium

W 3230g

Dimensions 15" x 9" x 22"

One size



Black

#### DEPARTURE III ROLLER

*Incorporates internal zipper compartments for better organisation*



Reinforced wheels and base to protect from damage whilst moving

NK270



NK271



#### DEPARTURE III BACKPACK

*Nike Air Max™ curved strap system, a ventilated die-cut air mesh back pad*



### NK271

#### Departure III backpack

- Durable twill polyester, Nike Air Max™ curved strap system
- 10 functional pockets including a separate padded laptop sleeve and a laptop cord pocket
- Designed for cresting compatibility

F 75% Polyester, 25% Polyurethane

W 930g

Dimensions 13.8" x 4.7" x 19.7"

One size



Black



## NK273

### Departure III messenger bag

- Durable twill polyester, shoulder strap to reduce slipping
- Multiple functional pockets
- 'Pass through' luggage sleeve easily fits over luggage handle

F 75% Polyester, 25% Polyurethane

W 920g

Dimensions 18.1" x 3.9" x 13.8"

One size



Black

NK273



**DEPARTURE III  
MESSENGER BAG**  
Featuring multiple  
functional pockets



Large, padded,  
comfortable and  
removable carry strap

## NK274

### Departure III duffle bag

- Durable twill polyester, external water-resistant valuables pocket
- Separate wet/dry compartment, external pocket with two internal mesh compartments
- Adjustable shoulder strap

F 75% Polyester, 25% Polyurethane

W 930g

Dimensions 20.4" x 11" x 11.4"

One size



Black

NK274



### DEPARTURE III DUFFLE BAG

Separate wet/dry and  
mesh compartments

Water-resistant and durable  
construction perfect for  
busy travellers



Strong reinforced carry  
straps built to last

## NK002

### Basic wallet

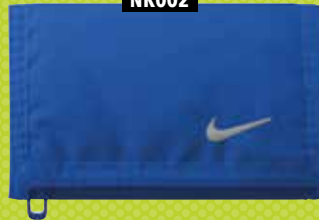
- Tri-fold design
- External zippered pocket
- Embroidered Nike swoosh on front

F Body: 100% Polyester. Lining: 100% Nylon

Dimensions Closed: 9 x 13cm. Open: 9 x 26cm

One size

NK002



**NK002 available in  
the following colours:**



Game Royal/White

Black/White

## SOCKS (3-pack)

Great value essential  
training socks

**NK218  
available in the  
following colours:**

NK218



Black



White



## NK218

### Dri-FIT crew socks (3-pack)

- Dri-FIT
- Anatomical fit
- Reinforced heel and toe

F 70% Polyester, 26% Nylon, 4% Elastane

M 5/8 L 8/11

## NK282

### Swoosh headband

- Embroidered Nike swoosh logo
- Machine washable
- Width: 2" / 5.08cm

F 70% Cotton, 19% Nylon, 7% Polyester, 4% Rubber

One size

## HEADBAND



NK282

## DOUBLEWIDE WRISTBANDS

NK281



## NK281

### Swoosh doublewide wristbands (one pair)

- Embroidered Nike swoosh logo
- Sold as a pair
- Machine washable

F 74% Cotton, 11% Nylon, 11% Polyester, 3% Rubber, 1% Spandex

One size

## WRISTBANDS

NK280



## NK280

### Swoosh wristbands (one pair)

- Embroidered Nike swoosh logo
- Sold as a pair
- Machine washable

F 72% Cotton, 12% Nylon, 11% Polyester, 4% Rubber, 1% Spandex

One size

**NK280, NK281 and NK282  
available in the following colours:**



Black/White

White/Black



# EQUIP TO TRAIN

## Partner your brand with Nike

### FUNDAMENTAL TOWEL

Hard-wearing and good-looking with contrast details

NK305



**NK305**  
available in the following colours:



Black/White



White/Black

### LIGHTWEIGHT ARM BAND

Clear window allows touch screen functions for smartphones

Sturdy shaped Velcro® strap keeps your phone secure



NK306

**NK306**  
available in the following colours:



Black/Silver



Vivid Pink/Silver

### NK305

#### Fundamental towel

- Long loop twisted cotton
- Contrast colour border detail
- Embroidered Nike swoosh design for visible brand recognition

F 100% Cotton

M L

### NK306

#### Lightweight arm band 2.0

- Compatible with most smartphones
- Clear window provides touch screen compatibility and screen protection
- Easy entry and exit of phone

F 50% Nylon, 20% Rubber, 10% TPU, 20% Polyester

One size

### EXERCISE WAIST CARRY PACKS

Zippered pockets keep your valuables secure during exercise



NK405

**NK405**  
available in the following colours:



Black/Black



Hyper Pink/Black

### NK405

#### Lean waist pack

- Adjustable elastic belt
- Expandable stretch mesh fabrication for customisable storage space
- Reflective detailing for enhanced visibility in low light conditions

F 100% Nylon

One size

### BALL PUMP

Dual action pumps air in less time

Ergonomic design for extra grip



NK003

NK248



### YOGA MAT

Sure grip textured surface for all types of floor work

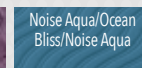
**NK248**  
available in the following colours:



Vivid Pink



Medium Grey/  
Dark Plum



Noise Aqua/Ocean  
Bliss/Noise Aqua

### NK003

#### Ball pump INTL

- Dual-action pump for more efficient air compression
- Extension hose and 1 needle
- Compact design

F 85% ABS (Acrylonitrile butadiene styrene), 14% Rubber, 1% Aluminium

One size



Black/  
White

### NK248

#### Yoga mat 3mm

- Closed-cell foam for enhanced traction
- Hand washable
- Carry string for easy transport

F 75% Thermoplastic elastomer, 25% Ethylene vinyl acetate

One size

# REHYDRATE

## NK005

### Hypercharge straw bottle 16oz

- Innovative slider button for one-handed opening
  - Detachable soft straw tip for easy cleaning
  - Durable, impact-resistant construction
  - 24% Polypropylene, 1% Thermoplastic elastomer, 5% Silicone, 3% Nylon 66, 1% Polyoxymethylene, 66% Copolyester
- One size**

16oz

NK005



### NK005 available in the following colours:



Anthracite/Cool Grey/White



Anthracite/Laser Orange/Laser Orange



Game Royal/Cool Grey/White



Vivid Pink/Cool Grey/White



Volt/Cool Grey/Black

18oz

NK407



### NK407 available in the following colours:



Anthracite/Black/White



Clear/Black/Black



Habanero Red/Black/Black



Photo Blue/Black/White



Pink Pow/Black/White



Volt/Black/Black

## NK407

### Hyperfuel water bottle 18oz

- Leakproof puff valve spout provides a quick flow of water
  - Strategically placed grip ergonomic bottle design for easy handling
  - Pliable material provides enhanced squeezability
  - 54% Low density polyethylene, 31% Polypropylene, 14% Thermoplastic elastomer, 1% Silicone
- One size**

24oz

NK004



## WIDER SPOUT

### NK004 available in the following colours:



Anthracite/Cool Grey/White



Anthracite/Laser Orange/Laser Orange



Game Royal/Cool Grey/White



Vivid Pink/Cool Grey/White



Volt/Cool Grey/Black

32oz

NK406



## LEAKPROOF

### NK406 available in the following colours:



Anthracite/Black/White



Clear/Black/Black



Game Royal/Black/White



University Red/Black/White

## NK004

### Hypercharge straw bottle 24oz

- Innovative slider button for one-handed opening
  - Detachable soft straw tip for easy cleaning
  - Durable, impact-resistant construction
  - 27% Polypropylene, 1% Thermoplastic elastomer, 5% Silicone, 3% Nylon 66, 1% Polyoxymethylene, 63% Copolyester
- One size**

## NEW HI-TECH DESIGNS

## NK406

### Hyper fuel water bottle 32oz

- Leakproof puff valve spout provides a quick flow of water
  - Translucent body enables you to track your consumption throughout your workout
  - Strategically placed grip and ergonomic bottle design allow for easy handling
  - 69% LDPE, 19% TPE, 19% PP, 1% Si valve
- Capacity: 946ml
- One size**

## NK249

### Big mouth water bottle

- Wide opening for convenient filling
  - Easy-grip screwcap
  - Tapered bottom to fit into bike bottle cages
  - 74% Low density polyethylene, 24% Polypropylene, 2% Thermoplastic polyurethane
- Capacity: 650ml
- One size**



Atomic Green/  
Atomic Green/  
Black

Black/  
Black/  
White

Clear/  
Black/  
Black

Game Royal/  
Game Royal/  
White

Pink Pow/  
Pink Pow/  
White

Sport Red/  
Sport Red/  
White

