



2020





2020

NEW FOR 2020

PAGE 4

FEEL GOOD RANGE

PAGE 6

FASHION RANGE

TEES + VESTS PAGE 14

SHORTS + LEGGINGS PAGE 32

JEANS + SHIRTS PAGE 36

POLOS PAGE 38

SWEATS + OUTERWEAR PAGE 42

LOUNGEWEAR PAGE 52

SF MINNI RANGE

PAGE 56

BACK OF THE BOOK

PAGE 70



SF254 PAGE 21



SF082 PAGE 55



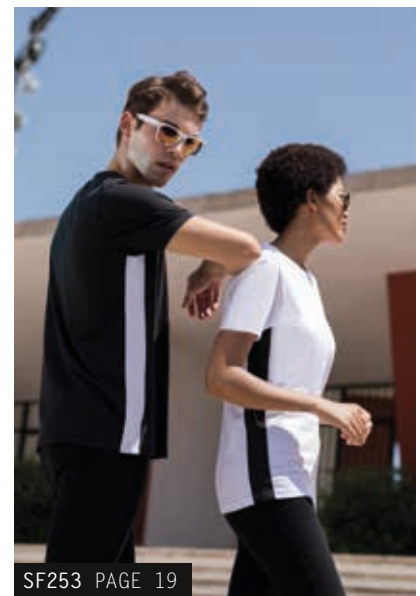
SM083 PAGE 54



SF259 PAGE 25



SF423 PAGE 47



SF253 PAGE 19



IT JUST GETS BETTER
11 NEW ON-TREND STYLES
FOR 2020

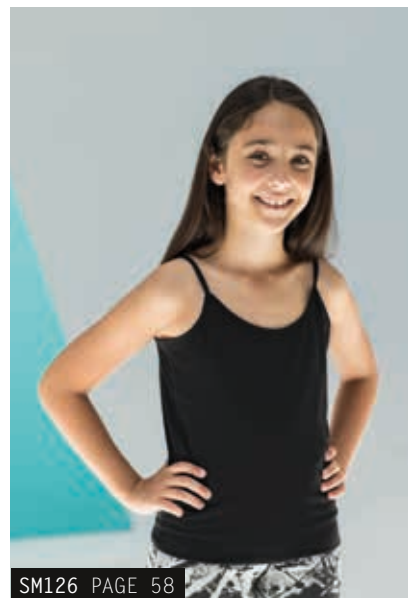
SK516 PAGE 49



SK426/SK427 PAGE 35



SM426/SM427 PAGE 61



SM126 PAGE 58



FEEL GOOD

16 STYLES, 26 COLOURS
SOFT STRETCH FABRIC.
SUPREME FINISH.
FEELS GOOD.



SF123 MEN'S FEEL GOOD STRETCH VEST (PAGE 12)
SK127 WOMEN'S FEEL GOOD STRETCH
CONTRAST STRAPPY VEST (PAGE 13)
SK122 WOMEN'S FEEL GOOD STRETCH V (PAGE 10)
SK124 WOMEN'S FEEL GOOD STRETCH
LONG SLEEVED T (PAGE 11)
SF121 MEN'S FEEL GOOD STRETCH T (PAGE 9)

THE FEEL GOOD RANGE



16 ON-TREND STYLES / 26 ON-TREND COLOURS



PRINTED FOR ILLUSTRATION PURPOSES; ALL GARMENTS ARE FREE FROM DECORATION

SF121/SK121 MEN'S/WOMEN'S FEEL GOOD STRETCH T

96% COTTON, 4% ELASTANE
165GSM SINGLE JERSEY, ENZYME FINISH
(H.PINK + H.RED: 90% COTTON, 6% VISCOSE, 4% ELASTANE.
H.GREY: 81% COTTON, 15% VISCOSE, 4% ELASTANE.
H.CHARCOAL: 60% COTTON, 36% POLYESTER, 4% ELASTANE
H.BLUE, H.NAVY + H.PURPLE: 65% POLYESTER, 30% COTTON,
5% ELASTANE)
MEN'S SF121 SIZES: XS-XXL (XS-BLACK + WHITE)
WOMEN'S SK121 SIZES: XS-XXL

SK121 ONLY	BLACK	BRIGHT RED	BURGUNDY	CLAY	NEW CORAL
BABY PINK	BLACK	BRIGHT RED	BURGUNDY	CLAY	CORAL
SK121 ONLY	NEW	SK121 ONLY	GREEN	H.BLUE	H.CHARCOAL
DEEP PURPLE	DUSKY PINK	FUCHSIA	GREEN	H.BLUE	H.CHARCOAL
H.GREY	H.NAVY	SK121 ONLY	SK121 ONLY	H.RED	KHAKI
H.GREY	H.NAVY	H.PINK	H.PURPLE	H.RED	KHAKI
LIGHT STONE	NAVY	ROYAL	SF121 ONLY SAPPHIRE	STONE BLUE	SURF BLUE
WHITE	NAVY	ROYAL	SAPPHIRE	STONE BLUE	SURF BLUE
WHITE	NEW YELLOW	ROYAL	SAPPHIRE	STONE BLUE	SURF BLUE





WORN WITH SK425/SF425 SLIM FIT CUFFED JOGGERS (PAGES 44-45)

SK122/SF122 WOMEN'S/MEN'S FEEL GOOD STRETCH V

96% COTTON, 4% ELASTANE
165GSM SINGLE JERSEY, ENZYME FINISH
(H.GREY: 81% COTTON, 15% VISCOSE, 4% ELASTANE)
WOMEN'S SK122 SIZES: XS-XXL
MEN'S SF122 SIZES: S-XXL



BLACK H.GREY NAVY WHITE





SK125/SF125
WOMEN'S/MEN'S FEEL GOOD
STRETCH ROLL NECK

96% COTTON, 4% ELASTANE
 165GSM SINGLE JERSEY, ENZYME FINISH
 WOMEN'S SK125 SIZES: XS-XXL
 MEN'S SF125 SIZES: S-XXL



BLACK



SK124/SF124
WOMEN'S/MEN'S FEEL GOOD
STRETCH LONG SLEEVED T

96% COTTON, 4% ELASTANE
 165GSM SINGLE JERSEY, ENZYME FINISH
 (H.GREY: 81% COTTON, 15% VISCOSE,
 4% ELASTANE, H.BLUE: 65% POLYESTER,
 30% COTTON, 5% ELASTANE)
 WOMEN'S SK124 SIZES: XS-XXL
 MEN'S SF124 SIZES: S-XXL



BLACK



BRIGHT RED



H.BLUE



H.GREY



WHITE



FEEL GOOD

SF123/SK123
MEN'S/WOMEN'S
FEEL GOOD
STRETCH VEST

96% COTTON, 4% ELASTANE
165GSM SINGLE JERSEY, ENZYME FINISH
(H.GREY: 81% COTTON, 15% VISCOSE,
4% ELASTANE)
MEN'S SF123 SIZES: S-XXL
WOMEN'S SK123 SIZES: XS-XXL





WORN WITH SK069 WOMEN'S RETRO SHORTS (PAGE 33)

SK127 WOMEN'S FEEL GOOD STRETCH CONTRAST STRAPPY VEST

96% COTTON, 4% ELASTANE
165GSM SINGLE JERSEY, ENZYME FINISH
SIZES: XS-L



BLACK/WHITE WHITE/BLACK



SK126 WOMEN'S FEEL GOOD STRETCH SPAGHETTI VEST

96% COTTON, 4% ELASTANE
165GSM SINGLE JERSEY, ENZYME FINISH
SIZES: XS-XL



BLACK



WORN WITH SK069 WOMEN'S RETRO SHORTS (PAGE 33)



FASHION
TEES +
VESTS



EMBROIDERED FOR ILLUSTRATION PURPOSES; ALL GARMENTS ARE FREE FROM DECORATION

SF204 UNISEX LONG SLEEVED STRIPED T

100% COTTON
160GSM SINGLE JERSEY
SIZES: XXS-XXL



WHITE/
OX. NAVY



SF202 UNISEX STRIPED T

100% COTTON
160GSM SINGLE JERSEY
(H.GREY: 85% COTTON, 15% VISCOSE)
SIZES: XXS-XXL



H.GREY/
WHITE

WHITE/
BURGUNDY

WHITE/
OX. NAVY



ALSO FOR
KIDS P.65

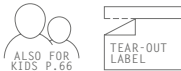


TEAR-OUT
LABEL



SF271/SK271
MEN'S/WOMEN'S
LONG SLEEVED BASEBALL T

100% COTTON
 140GSM SINGLE JERSEY
 (H.GREY: 85% COTTON, 15% VISCOSE)
 MEN'S SF271 SIZES: XS-XXL
 WOMEN'S SK271 SIZES: XS-XL



SF203 UNISEX WASHED BAND T

100% COTTON
160GSM SINGLE JERSEY
PIGMENT DYED, HEAVY STONE + HEAVY ENZYME WASHED
SIZES: XXS-XXL



WASHED BLACK



EACH GARMENT HAS BEEN INDIVIDUALLY DYED, GIVING IT A UNIQUE FINISH. THE EFFECT MAY VARY FROM GARMENT TO GARMENT AND WILL VARY FURTHER AFTER WASHING, ADDING TO THE CHARACTER OF THIS STYLE. FIRST WASH SEPARATELY. THEN ALWAYS WASH WITH LIKE COLOURS. COLOUR MAY TRANSFER ONTO LIGHT COLOURS.



SF520 UNISEX WASHED TOUR SWEAT
(PAGE 48)

PRINTED FOR ILLUSTRATION PURPOSES; ALL GARMENTS ARE FREE FROM DECORATION



NEW SF253
UNISEX CONTRAST T

100% COTTON
140GSM SINGLE JERSEY
100% POLYESTER TAPING (WHITE TAPE
SUITABLE FOR SUBLIMATION PRINTING)
SIZES: XXS-XXL



BLACK/WHITE WHITE/BLACK



SF514 UNISEX DROP SHOULDER SLOGAN TOP

100% COTTON
220GSM SINGLE JERSEY
GARMENT WASHED
(H.GREY: 85% COTTON, 15% VISCOSE)
SIZES: XXS-XXL



WORN WITH NEW SF453 UNISEX CONTRAST JOGGERS (PAGE 47)
SK425 WOMENS SLIM FIT CUFFED JOGGERS (PAGES 44-45)
SF600 MEN'S STRETCH SKINNI JEANS (PAGES 36-37)

PRINTED FOR ILLUSTRATION PURPOSES: ALL GARMENTS ARE FREE FROM DECORATION



NEW SF254
UNISEX SCOOP NECK T

60% COTTON, 40% POLYESTER
140GSM SINGLE JERSEY
SIZES: XXS-XXL





SK213
WOMEN'S SLOUNGE T

100% COTTON
140GSM SINGLE JERSEY
SIZES: S-XL



BLACK WHITE



SK263
WOMEN'S SLOUNGE TOP

100% VISCOSE
170GSM SINGLE JERSEY
SIZES: XS-XL



BLACK



WORN WITH SK424 WOMEN'S REVERSIBLE WORKOUT LEGGINGS (PAGE 30 + 34)



SK233 WORN WITH NEW SK426 WOMEN'S FASHION LEGGINGS (PAGE 35)
 SK237 WORN WITH SK425 WOMEN'S SLIM FIT CUFFED JOGGERS (PAGE 44-45)

SK233 WOMEN'S DROP TAIL T

60% COTTON, 40% POLYESTER
 140GSM SINGLE JERSEY
 (H.GREY: 85% COTTON, 15% VISCOSE)
 SIZES: XS-XXL



BLACK H.GREY WHITE



SK237 WOMEN'S CROPPED BOXY T

60% COTTON, 40% POLYESTER
 140GSM SINGLE JERSEY
 SIZES: XXS-XL



BLACK WHITE





SK104 WOMEN'S STRETCH VEST DRESS

96% COTTON, 4% ELASTANE
190GSM SINGLE JERSEY
SIZES: S-XL



SK257 WOMEN'S T-SHIRT DRESS

100% COTTON
180GSM SINGLE JERSEY
SIZES: S-XL



SF258

MEN'S LONGLINE T

WITH DIPPED HEM

100% COTTON
140GSM SINGLE JERSEY
(H.CHARCOAL: 60% COTTON, 40% POLYESTER)
SIZES: S-XXL



NEW SF259

MEN'S LONG SLEEVED LONGLINE T

WITH DIPPED HEM

100% COTTON
140GSM SINGLE JERSEY
SIZES: S-XXL



SF236 MEN'S MUSCLE VEST

60% COTTON, 40% POLYESTER
140GSM SINGLE JERSEY
(H.GREY: 85% COTTON, 15% VISCOSE)
SIZES: S-XXL



SK234 WOMEN'S SLOUNGE VEST

60% COTTON, 40% POLYESTER
140GSM SINGLE JERSEY
SIZES: XS-XXL





SF232/SK232 MEN'S/WOMEN'S HIGH NECK SLASH ARMHOLE VEST

60% COTTON, 40% POLYESTER
140GSM SINGLE JERSEY
(H.GREY: 85% COTTON, 15% VISCOSE)
SIZES: XS-XXL



* PLEASE NOTE SOME STOCK OF SK232 MAY HAVE
WOVEN CUT-OUT BACK NECK LABELS, ALL RECENT
AND NEW PRODUCTION HAS TEAR-OUT LABELS

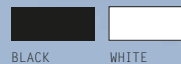
SK236 WOMEN'S FASHION CROP TOP

96% POLYESTER, 4% ELASTANE
240GSM SINGLE JERSEY (+ JACQUARD BAND)
WHITE SUITABLE FOR SUBLIMATION PRINTING
SIZES: XS-L



SK170 WOMEN'S HIGH NECK CROP VEST

96% COTTON, 4% ELASTANE
220GSM SINGLE JERSEY
SIZES: XS-L



SK236 WORN WITH SK436 WOMEN'S FASHION BRIEFS (PAGE 29)
AND SK425 WOMEN'S SLIM FIT CUFFED JOGGERS (PAGES 44-45)
SK170 WORN WITH SK424 WOMEN'S REVERSIBLE WORKOUT LEGGINGS (PAGES 30 + 34)



SK150
WOMEN'S STRETCH RACER-BACK TANK

96% COTTON, 4% ELASTANE
240GSM 2X1 STRETCH RIB
SIZES: S-L



BLACK WHITE



STRETCH

SK436
WOMEN'S FASHION BRIEFS

96% POLYESTER, 4% ELASTANE
100% COTTON GUSSET
240GSM SINGLE JERSEY (+ JACQUARD BAND)
WHITE SUITABLE FOR SUBLIMATION PRINTING
SIZES: XS-L



BLACK/WHITE WHITE/WHITE



TEAR-OUT LABEL



STRETCH



SK236 NOW AVAILABLE
IN BLACK/BLACK

SK436 SHOWN WITH SK236 WOMEN'S FASHION CROP TOP

BODY + MIND EDIT

SK424 WOMEN'S REVERSIBLE WORKOUT LEGGINGS

89% POLYESTER, 11% ELASTANE
270GSM BONDED INTERLOCK
SIZES: XS-XL



BLACK/PRINT



ALSO FOR KIDS P.60



TEAR-OUT LABEL



STRETCH

SK240 WOMEN'S REVERSIBLE WORKOUT VEST

89% POLYESTER, 11% ELASTANE
270GSM BONDED INTERLOCK
SIZES: XS-XL



BLACK/PRINT



BRAND FREE



STRETCH





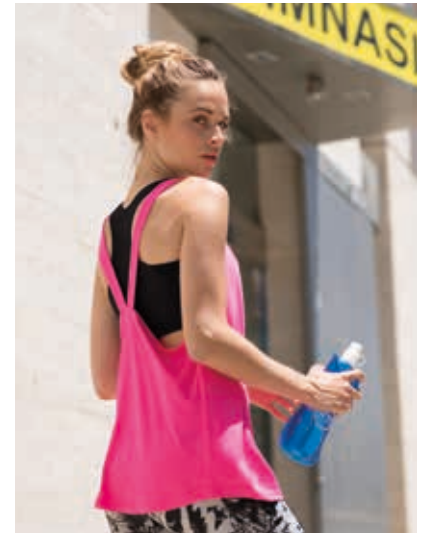
WORN WITH SK235 WOMEN'S WORKOUT CROPPED TOP (BELOW)

SK241
WOMEN'S FASHION WORKOUT VEST

90% POLYESTER, 10% ELASTANE
150GSM SINGLE JERSEY
SIZES: XS-XXL



BLACK NEON PINK WHITE

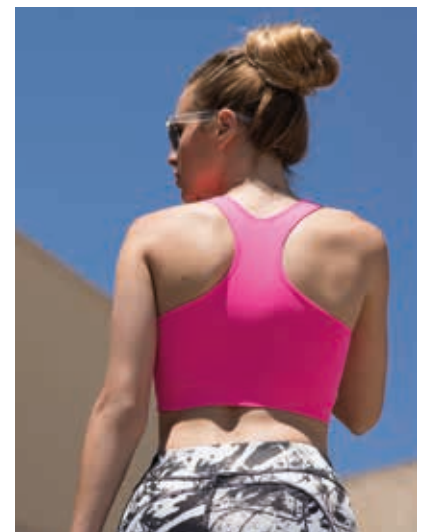


SK235
WOMEN'S WORKOUT CROPPED TOP

BLACK: 65% POLYAMIDE,
31% POLYESTER, 4% ELASTANE
NEON PINK: 92% POLYAMIDE, 8% ELASTANE
280GSM DOUBLE LAYER INTERLOCK
SIZES: XS-L



BLACK NEON PINK



FASHION SHORTS + LEGGINGS

SK062 WOMEN'S SHORTS

96% COTTON, 4% ELASTANE
220GSM SINGLE JERSEY
SIZES: S-L



BLACK

WHITE



ALSO FOR
KIDS P. 62

STRETCH

WORN WITH SK121 WOMEN'S FEEL GOOD STRETCH T (PAGE 9)



SK069 WORN WITH SK237 WOMEN'S CROPPED BOXY T, TUCKED IN (PAGE 23)
 SF069 WORN WITH SF202 UNISEX STRIPED T (PAGE 16)

SK069 WOMEN'S RETRO SHORTS

100% COTTON
 220GSM SINGLE JERSEY
 (H.GREY: 85% COTTON, 15% VISCOSE)
 SIZES: XS-XXL



BLACK/BLACK BLACK/WHITE B. PINK/WHITE BURGUNDY/WHITE H. GREY/BLACK NAVY/WHITE



RED/WHITE RED/YELLOW

SF069 MEN'S RETRO SHORTS

WITH POCKETS

100% COTTON
 250GSM FRENCH TERRY
 (H.GREY: 85% COTTON, 15% VISCOSE)
 SIZES: S-XL



BLACK/WHITE H. GREY/BLACK NAVY/WHITE

SK068 WOMEN'S 3/4 LENGTH LEGGINGS

96% COTTON, 4% ELASTANE
190GSM SINGLE JERSEY
SIZES: XS-XXL



BLACK



SK064 WOMEN'S LEGGINGS

96% COTTON, 4% ELASTANE
190GSM SINGLE JERSEY
SIZES: XS-XL



BLACK



SK424 WOMEN'S REVERSIBLE WORKOUT LEGGINGS

89% POLYESTER, 11% ELASTANE
270GSM BONDED INTERLOCK
SIZES: XS-XL



BLACK/PRINT



SK068 WORN WITH SF514 DROP SHOULDER SLOGAN TOP (PAGE 20)
SK064 WORN WITH SK515 WOMEN'S CROPPED SLOUNGE SWEAT (PAGE 49)
SK424 WORN WITH SK516 WOMEN'S CROPPED SLOUNGE HOODY (PAGE 49)



NEW

SK426/SK427

**WOMEN'S FASHION
LEGGINGS/CYCLING
SHORTS**

88% POLYESTER, 12% ELASTANE
280GSM SINGLE JERSEY (+ JACQUARD BAND)
WHITE SUITABLE FOR SUBLIMATION PRINTING
SIZES: XS-XL

SK426 ONLY

BLACK/WHITE

SK427 ONLY

BLACK/BLACK

ALSO FOR
KIDS P. 61

TEAR-OUT
LABEL

STRETCH

WORN WITH SK236 WOMEN'S FASHION CROP TOP (PAGE 28)

SF560 MEN'S BRUSHED CHECK CASUAL SHIRT

65% POLYESTER, 35% VISCOSE
120GSM TWILL, BRUSHED
SIZES: S-XXL



BURGUNDY CHECK LIGHT GREY CHECK NAVY CHECK



SK600/SF600 WOMEN'S/MEN'S STRETCH SKINNI JEANS

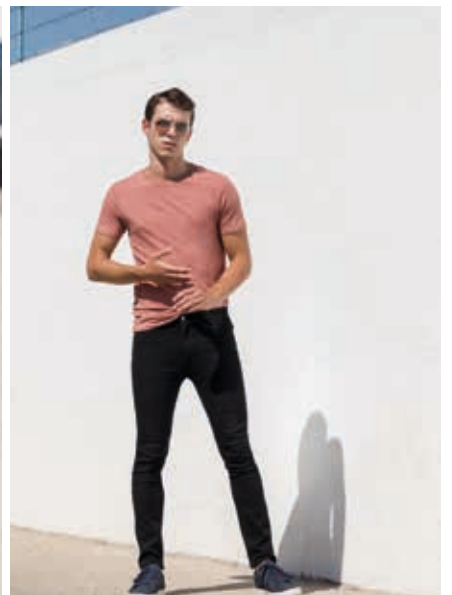
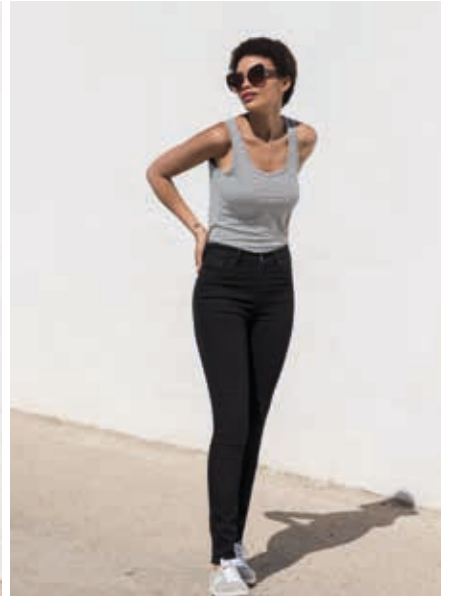
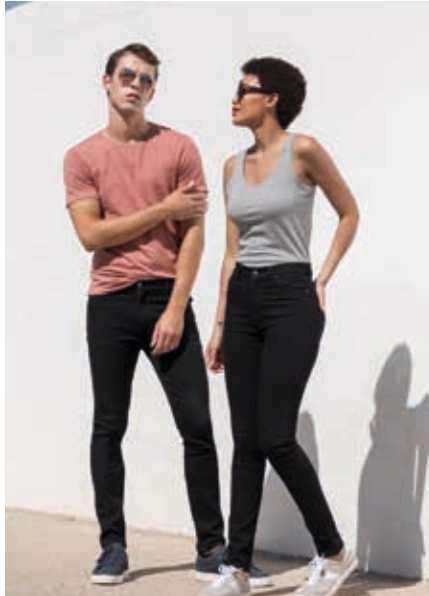
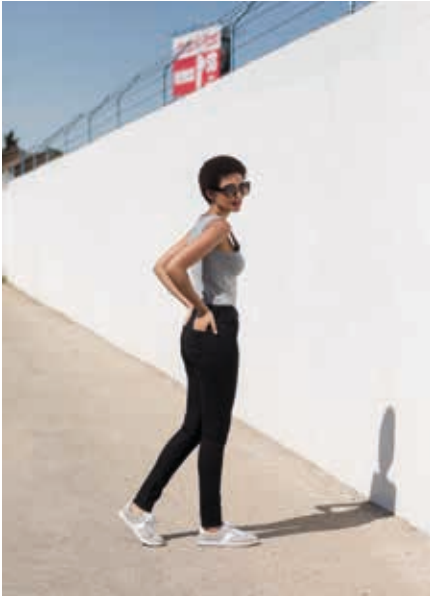
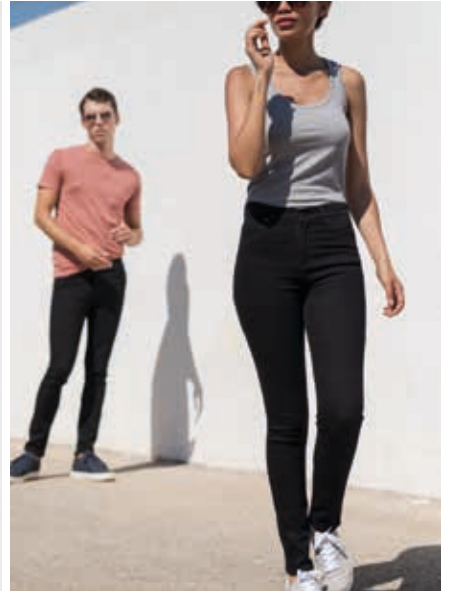
73% COTTON, 25% POLYESTER, 2% ELASTANE
11.5OZ TWILL, GARMENT WASHED
WOMEN'S SK600 SIZES: W26"/UK 8/EUR 36 - W36"/UK 18/EUR 46
REG + LONG LENGTHS
MEN'S SF600 SIZES: W28"/EUR 38 - W40"/EUR 50
REG + LONG LENGTHS



BLACK



FASHION
JEANS +
SHIRTS



SF600 WORN WITH SF121 MEN'S FEEL GOOD STRETCH T (PAGE 9)
SK600 WORN WITH SK123 WOMEN'S FEEL GOOD STRETCH VEST (PAGE 12)
AND SK127 WOMEN'S FEEL GOOD STRETCH CONTRAST STRAPPY VEST (PAGE 13)

A woman with her hair in a bun, wearing a light blue short-sleeved polo shirt and black pants, is leaning against a light-colored wooden wall. The lighting is soft and directional, creating a shadow of her on the wall behind her. The text 'FASHION POLOS' is overlaid in large white letters across the center of the image.

FASHION
POLOS

SK440/SF440 WOMEN'S/MEN'S FASHION POLO

100% COTTON
180GSM SINGLE JERSEY
WOMEN'S SK440 SIZES: XS-XL
MEN'S SF440 SIZES: S-XXL





SF042/SK042 MEN'S/WOMEN'S SHORT SLEEVED STRETCH POLO

96% COTTON, 4% ELASTANE
200GSM MICRO PIQUE
MEN'S SF042 SIZES: S-XXL
WOMEN'S SK042 SIZES: S-XL



SF044/SK044 MEN'S/WOMEN'S LONG SLEEVED STRETCH POLO

96% COTTON, 4% ELASTANE
200GSM MICRO PIQUE
MEN'S SF044 SIZES: S-XXL
WOMEN'S SK044 SIZES: S-XL



BLACK

WHITE



TEAR-OUT
LABEL

STRETCH



FASHION
SWEATS +
OUTERWEAR





SF525
UNISEX SLIM FIT
SWEAT

60% COTTON, 40% POLYESTER
250GSM BRUSHED BACK FLEECE
(H.GREY: 75% COTTON 20% POLYESTER,
5% VISCOSE)
SIZES: XXS-XXL



BLACK BURGUNDY H.GREY NAVY



SF425/SK425
MEN'S/WOMEN'S
SLIM FIT CUFFED
JOGGERS

60% COTTON, 40% POLYESTER
250GSM BRUSHED BACK FLEECE
(H.GREY: 75% COTTON 20% POLYESTER,
5% VISCOSE)
MEN'S SF425 SIZES: S-XXL
WOMEN'S SK425 SIZES: XS-XL



BLACK H.GREY NAVY



SF526
UNISEX SLIM FIT
ZIP-THROUGH
HOODY

60% COTTON, 40% POLYESTER
250GSM BRUSHED BACK FLEECE
(H.GREY: 75% COTTON, 20% POLYESTER,
5% VISCOSE)
SIZES: XXS-XXL



BLACK BURGUNDY H.GREY NAVY





WORN WITH NEW SF254 UNISEX SCOOP NECK T (PAGE 21)



SF527
UNISEX OVERSIZED
HOODY

60% COTTON, 40% POLYESTER
250GSM BRUSHED BACK FLEECE
(H.GREY: 75% COTTON, 20% POLYESTER, 5% VISCOSE)
SIZES: XXS-XXL



BLACK



H.GREY



NAVY



SF523
UNISEX CONTRAST
SWEAT
NEW SF423
UNISEX CONTRAST
JOGGERS

60% COTTON, 40% POLYESTER
250GSM BRUSHED BACK FLEECE
100% POLYESTER TAPING (SUITABLE FOR
SUBLIMATION PRINTING)
SIZES: XXS-XXL



BLACK/
WHITE

BURGUNDY/
WHITE

NAVY/
WHITE



TEAR-OUT
LABEL





SF203 UNISEX WASHED BAND T (PAGE 18)

SF520 UNISEX WASHED TOUR SWEAT

100% COTTON
250GSM FRENCH TERRY
PIGMENT DYED, HEAVY STONE
+ HEAVY ENZYME WASHED
SIZES: XXS-XXL



WASHED BLACK



EACH GARMENT HAS BEEN INDIVIDUALLY DYED, GIVING IT A UNIQUE FINISH. THE EFFECT MAY VARY FROM GARMENT TO GARMENT AND WILL VARY FURTHER AFTER WASHING, ADDING TO THE CHARACTER OF THIS STYLE. FIRST WASH SEPARATELY. THEN ALWAYS WASH WITH LIKE COLOURS. COLOUR MAY TRANSFER ONTO LIGHT COLOURS.

PRINTED FOR ILLUSTRATION PURPOSES; ALL GARMENTS ARE FREE FROM DECORATION



WORN WITH NEW SK427 WOMEN'S FASHION CYCLING SHORTS (PAGE 35)

SK513 WOMEN'S SLOUNGE SWEAT

BLACK: 100% COTTON
H.GREY: 85% COTTON, 15% VISCOSE
OX.NAVY MARL: 60% COTTON,
40% POLYESTER
250GSM FRENCH TERRY
SIZES: S-XL



BLACK



H.GREY



OX.NAVY MARL



NEW SK516

WOMEN'S CROPPED
SLOUNGE HOODY

SK515

WOMEN'S CROPPED
SLOUNGE SWEAT

BLACK: 80% COTTON, 20% POLYESTER
H.GREY: 70% COTTON, 30% POLYESTER
280GSM BRUSHED BACK FLEECE
SIZES: XS-XL



BLACK H.GREY



TEAR-OUT
LABEL



SK516 WORN WITH SK424 REVERSIBLE WORKOUT LEGGINGS (PAGES 30 + 34)
SK515 WORN WITH NEW SK426 FASHION LEGGINGS (PAGE 35)



SF511 WORN WITH SF560 BRUSHED CHECK CASUAL SHIRT (PAGE 35)

SF511 UNISEX BOMBER ZIP-THROUGH SWEAT

70% COTTON, 30% POLYESTER
330GSM BRUSHED BACK FLEECE
SIZES: XS-XXL



BLACK NAVY



SF512 UNISEX BASEBALL JACKET WITH DETACHABLE HOOD

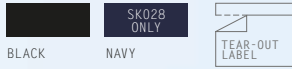
70% COTTON, 30% POLYESTER
330GSM BRUSHED BACK FLEECE
(H.GREY: 60% COTTON, 40% POLYESTER)
SIZES: XS-XXL



BLACK/
OFF WHITE NAVY/
H.GREY

SF028/SK028 MEN'S/WOMEN'S MICROFLEECE JACKET

100% POLYESTER
200GSM MICROFLEECE
MEN'S SF028 SIZES: S-XXL
WOMEN'S SK028 SIZES: XS-XXL



SF028 WORN WITH SF423 UNISEX CONTRAST JOGGERS (PAGE 47)
SK028 WORN WITH SK069 WOMEN'S RETRO SHORTS (PAGE 33)



SF470 UNISEX ALL-IN-ONE

80% COTTON, 20% POLYESTER
280GSM BRUSHED BACK FLEECE
(H.GREY: 71% COTTON, 23% POLYESTER, 6% VISCOSE)
SIZES: XXS/XS, S/M, L/XL



BLACK FUCHSIA H.GREY NAVY



ALSO FOR
KIDS



TEAR-OUT
LABEL

SM470 KIDS' ALL-IN-ONE

80% COTTON, 20% POLYESTER
280GSM BRUSHED BACK FLEECE
(H.GREY: 71% COTTON, 23% POLYESTER, 6% VISCOSE)
SIZES (YEARS): 3-4, 5-6, 7-8, 9-10, 11-12, 13



BLACK BRIGHT RED FUCHSIA GREEN H.GREY NAVY



PURPLE



SAPPH.BLUE



ALSO FOR
ADULTS



TEAR-OUT
LABEL



FASHION LOUNGEWEAR

SK083/**NEW** SM083/SF083 WOMEN'S/KIDS'/MEN'S TARTAN LOUNGE PANTS

100% COTTON
115GSM FLANNEL (TWILL WEAVE)
WOMEN'S SK083 SIZES: XXS-XL
KIDS' SM083 SIZES (YEARS):
5-6, 7-8, 9-10, 11-12, 13
MEN'S SF083 SIZES: XS-XXL



NAVY/GREEN CHECK



RED/NAVY CHECK



WHITE/MULTI CHECK
(SF083 ONLY)



WHITE/PINK CHECK
(SK083 + SM083)



TEAR-OUT LABEL



SK083 WORN WITH SK123 WOMEN'S FEEL GOOD STRETCH VEST (PAGE 12)
SM083 WORN WITH SM121 KIDS' FEEL GOOD STRETCH T (PAGE 59)
SF083 WORN WITH SF121 MEN'S FEEL GOOD STRETCH T (PAGE 9)

SK082
WOMEN'S
TARTAN FRILL
LOUNGE SHORTS
NEW SF082
MEN'S TARTAN
LOUNGE SHORTS

100% COTTON
 115GSM FLANNEL (TWILL WEAVE)
 WOMEN'S SK082 SIZES: XXS-XL
 MEN'S SF082 SIZES: XS-XXL



NAVY/GREEN CHECK



RED/NAVY CHECK



WHITE/PINK CHECK
 (SK082 ONLY)



SK082 WORN WITH SK123 WOMEN'S FEEL GOOD STRETCH VEST (PAGE 12)
 SF082 WORN WITH SF121 MEN'S FEEL GOOD STRETCH T (PAGE 9)

S F X
LARKWOOD

MATCHING BABY TARTAN LOUNGE PANTS (LW083)
 AVAILABLE FROM LARKWOOD

VISIT: LARKWOODCLOTHING.COM
 FOR MORE INFORMATION



larkwood
 Baby and Toddler Collection



S F M I N N I

SM123 KIDS' FEEL GOOD STRETCH VEST (PAGE 59)
SM069 KIDS' RETRO SHORTS (PAGE 63)
SM424 KIDS' REVERSIBLE WORKOUT LEGGINGS (PAGE 60)
SM121 KIDS' FEEL GOOD STRETCH T (PAGE 59)
SM425 KIDS' SLIM FIT CUFFED JOGGERS (PAGE 68)



SM127

KIDS' FEEL GOOD STRETCH CONTRAST STRAPPY VEST

96% COTTON, 4% ELASTANE
165GSM SINGLE JERSEY, ENZYME FINISH
SIZES (YEARS): 5-6, 7-8, 9-10, 11-12



NEW SM126

KIDS' FEEL GOOD STRETCH SPAGHETTI VEST

96% COTTON, 4% ELASTANE
165GSM SINGLE JERSEY, ENZYME FINISH
SIZES (YEARS): 5-6, 7-8, 9-10, 11-12



WORN WITH SM424 KIDS' REVERSIBLE WORKOUT LEGGINGS (PAGE 60)

SM123 WORN WITH SM069 KIDS' RETRO SHORTS (PAGE 63)
 AND SM424 KIDS' REVERSIBLE WORKOUT LEGGINGS (PAGE 60)
 SM121 WORN WITH SM425 KIDS' SLIM FIT CUFFED JOGGERS (PAGE 68)
 AND SM069 RETRO SHORTS (PAGE 63)



SM123 KIDS' FEEL GOOD STRETCH VEST

96% COTTON, 4% ELASTANE
 165GSM SINGLE JERSEY, ENZYME FINISH
 SIZES (YEARS): 5-6, 7-8, 9-10, 11-12



BLACK WHITE



SM121 KIDS' FEEL GOOD STRETCH T

96% COTTON, 4% ELASTANE
 165GSM SINGLE JERSEY, ENZYME FINISH
 SIZES (YEARS): 3-4, 5-6, 7-8, 9-10, 11-12



BLACK BRIGHT RED FUCHSIA NAVY ROYAL WHITE





SM424 KIDS' REVERSIBLE WORKOUT LEGGINGS

89% POLYESTER, 11% ELASTANE
270GSM BONDED INTERLOCK
SIZES (YEARS): 5-6, 7-8, 9-10, 11-12



BLACK/PRINT



ALSO FOR
WOMEN P. 30/34



TEAR-OUT
LABEL



STRETCH

SM241 KIDS' FASHION WORKOUT VEST

90% POLYESTER, 10% ELASTANE
150GSM SINGLE JERSEY
SIZES (YEARS): 5-6, 7-8, 9-10, 11-12



BLACK NEON PINK WHITE



ALSO FOR
WOMEN P. 31



TEAR-OUT
LABEL



STRETCH

SM236 KID'S FASHION CROP TOP

WITH DOUBLE LAYER FRONT
96% POLYESTER, 4% ELASTANE
240GSM SINGLE JERSEY (+ JACQUARD BAND)
WHITE SUITABLE FOR SUBLIMATION PRINTING
SIZES (YEARS): 5-6. 7-8. 9-10. 11-12

NEW

BLACK/BLACK BLACK/WHITE WHITE/WHITE

ALSO FOR WOMEN P.28

TEAR-OUT LABEL

STRETCH

NEW SM426/SM427 KID'S FASHION LEGGINGS/ CYCLING SHORTS

88% POLYESTER, 12% ELASTANE
280GSM SINGLE JERSEY (+ JACQUARD BAND)
WHITE SUITABLE FOR SUBLIMATION PRINTING
SIZES (YEARS): 5-6. 7-8. 9-10. 11-12

SM426 ONLY SM427 ONLY

BLACK/WHITE BLACK/BLACK

ALSO FOR WOMEN P.35

TEAR-OUT LABEL

STRETCH



SM016
KIDS' TANK VEST

100% COTTON
220GSM INTERLOCK
SIZES (YEARS): 4-6. 7-9. 10-12



BLACK FUCHSIA WHITE



SM062
KIDS' SHORTS

96% COTTON, 4% ELASTANE
220GSM SINGLE JERSEY
SIZES (YEARS): 5-6. 7-8. 9-10. 11-12



BLACK



SM170
KIDS' HIGH NECK CROP VEST

96% COTTON, 4% ELASTANE
220GSM SINGLE JERSEY
SIZES (YEARS): 5-6. 7-8. 9-10. 11-12



BLACK WHITE



SM064
KIDS' LEGGINGS

96% COTTON, 4% ELASTANE
190GSM SINGLE JERSEY
SIZES (YEARS):
3-4. 5-6. 7-8. 9-10. 11-12



BLACK





WORN WITH SM202 KIDS' STRIPED T (PAGE 65),
 SM121 KIDS' FEEL GOOD STRETCH T (PAGE 59)
 AND SM271 KIDS' LONG SLEEVED BASEBALL T (PAGE 66)

SM069 KIDS' RETRO SHORTS

100% COTTON
 220GSM SINGLE JERSEY
 SIZES (YEARS): 5-6, 7-8, 9-10, 11-12



SF MINNI

SM258 KIDS' LONGLINE T

WITH DIPPED HEM

100% COTTON
140GSM SINGLE JERSEY
SIZES (YEARS): 5-6, 7-8, 9-10, 11-12



BLACK WHITE





WORN WITH SM425 KIDS' SLIM FIT CUFFED JOGGERS (PAGE 68)

SM202 KIDS' STRIPED T

100% COTTON
160GSM SINGLE JERSEY
SIZES (YEARS): 5-6, 7-8, 9-10, 11-12



WHITE/
OX. NAVY

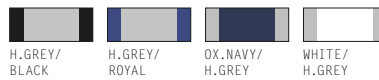




WORN WITH SM425 KIDS' SLIM FIT CUFFED JOGGERS (PAGE 68)

SM271 KIDS' LONG SLEEVED BASEBALL T

100% COTTON
140GSM SINGLE JERSEY
(H.GREY: 85% COTTON, 15% VISCOSE)
SIZES (YEARS): 5-6, 7-8, 9-10, 11-12



H.GREY/
BLACK

H.GREY/
ROYAL

OX.NAVY/
H.GREY

WHITE/
H.GREY

WHITE/
HOT PINK

WHITE/
OX.NAVY

WHITE/
RED





PRINTED FOR ILLUSTRATION PURPOSES; ALL GARMENTS ARE FREE FROM DECORATION

WORN WITH SM064 KIDS' LEGGINGS (PAGE 62) AND SM425 KIDS' SLIM FIT CUFFED JOGGERS (PAGE 68)

SM514

KIDS' DROP SHOULDER SLOGAN TOP

100% COTTON
 220GSM SINGLE JERSEY
 SIZES (YEARS): 5-6, 7-8, 9-10, 11-12



BLACK

BRIGHT PINK

OX. NAVY/
 WHITE
 STRIPES

WHITE



ALSO FOR
 ADULTS P. 20



TEAR-OUT
 LABEL

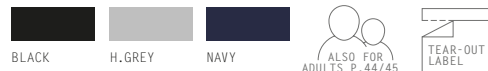
SM526 KIDS' SLIM FIT ZIP-THROUGH HOODY

60% COTTON, 40% POLYESTER
250GSM BRUSHED BACK FLEECE
(H.GREY: 75% COTTON, 20% POLYESTER, 5% VISCOSE)
SIZES (YEARS): 5-6, 7-8, 9-10, 11-12



SM425 KIDS' SLIM FIT CUFFED JOGGERS

60% COTTON, 40% POLYESTER
250GSM BRUSHED BACK FLEECE
(H.GREY: 75% COTTON, 20% POLYESTER, 5% VISCOSE)
SIZES (YEARS): 5-6, 7-8, 9-10, 11-12



WORN WITH SM202 KIDS' STRIPED T (PAGE 65)

SM470 KIDS' ALL-IN-ONE

80% COTTON, 20% POLYESTER
280GSM BRUSHED BACK FLEECE
(H.GREY: 71% COTTON, 23% POLYESTER, 6% VISCOSE)
SIZES (YEARS): 3-4, 5-6, 7-8, 9-10, 11-12, 13



ETHICS AND STANDARDS

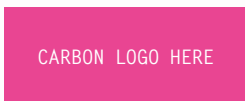
ENVIRONMENTAL

Henbury are fully committed to the wellbeing and development of our planet which has encouraged big changes to our personal outlook and the way we trade. We aim to help our customers and make it easier to reduce the volume of waste going to landfill. Going forward, our products will be packaged in recycled plastic bags, which are recyclable at the end of life. Packaging components are being reduced by a huge 77% across shirts and we are reducing the number of products that are individually packaged. Finally, our bags will be made for reuse; they are resealable for ease of re-packaging and branding is being removed to allow ease of re-branding.

On top of this, our employees are making a conscious choice to go paperless and recycle all excess fabrics/garments.

It is our corporate responsibility to make an impact in reducing our carbon footprint. All of our marketing materials printed for 2020 have been carbon balanced helping reduce CO2 emissions and preserving ecologically endangered land with World Land Trust. By using FSC certified papers and printers, promoting responsible management of the world's forests, we are doing our part to make a change.

To find out more please visit: carbonbalancedpaper.com



MANUFACTURERS

We work with the very highest level of manufacturers developing strong, long-term partnerships to promote understanding of International Ethical Trading practices. Working with all our global suppliers to promote respect for workers' rights, ensuring workers are free from exploitation and discrimination, and enjoy conditions of freedom, security and equality. We fully recognise the importance of the people and the countries where we manufacture, and we require any associated manufacturer or supplier to share our commitment to fair and safe working practices. Our manufacturing locations are personally selected, inspected via an independent, fully recognised and accredited ethical auditing body and supported with continuous monitoring by our local representatives.

This ensures working conditions and practices are to the highest standard and within local government laws.

In addition to ensuring our high ethical standards are achieved, we support and sponsor a number of local charities within the communities with which we work and manufacture.

CERTIFICATIONS

A further indication of our commitment to social responsibility is in the number of certifications that we hold. Specific information by style and clarification relating to various certifications and standards is available from us on request.



STAY CONNECTED

For any questions about SF contact us at: enquiries@sf-clothing.com or visit sf-clothing.com

HENBURYBRANDS

For more great quality and style, check out the full range of brands at henburybrands.com

SOCIAL

Keep in the loop with where we're going and the new trends we love!



IMAGES

Get access to our logos, torso shots, and lifestyle photography: cloud.henbury.com

MEET

Want to see and feel our range for yourself? We're exhibiting at the following trade shows:



Europe's leading trade fair for textile decoration and promotion
January 30 – February 01, 2020
Messe Stuttgart, Germany

Keep an eye out for social media updates on additional shows throughout the year.

If you'd like a visit from our brand rep, please contact enquiries@sf-clothing.com

SIZE GUIDE AND BODY MEASUREMENTS

UNISEX

UNISEX SIZES – TOPS	XXS	XS	S	M	L	XL	XXL
UK MEN'S SIZE - TO FIT	XXS	XS	S	M	L	XL	XXL
EUR MEN'S - CHEST - TO FIT	42-44	44-46	46-48	48-50	52	54-56	58
UK WOMEN'S - TO FIT	10	12	14	16	18	20	22
EUR WOMEN'S - TO FIT	38	40	42	44	46	48	50
CHEST - TO FIT - INCHES	32-34"	34-36"	36-38"	38-40"	42"	44-46"	48"
CHEST - TO FIT - CMS	81-86cm	86-91cm	91-96cm	96-101cm	107cm	112-117cm	122cm

UNISEX SIZES – BOTTOMS	XXS	XS	S	M	L	XL	XXL
UK MEN'S SIZE - TO FIT	XXS	XS	S	M	L	XL	XXL
EUR MEN'S - WAIST - TO FIT	38	40	42	44	46	48	50
UK WOMEN'S - TO FIT	10	12	14	16	18	20	22
EUR WOMEN'S - TO FIT	38	40	42	44	46	48	50
WAIST - TO FIT - INCHES	28"	30"	32"	34"	36"	38"	40"
WAIST - TO FIT - CMS	71cm	76cm	81cm	86cm	91cm	96cm	101cm
INSIDE LEG LENGTH - TO FIT REGULAR - INCHES	32"	32"	32"	32"	32"	32"	32"
INSIDE LEG LENGTH - TO FIT REGULAR - CM	81cm	81cm	81cm	81cm	81cm	81cm	81cm

MEN

MEN'S SIZES (EXCL. JEANS)	XS	S	M	L	XL	XXL
EUR - CHEST - TO FIT	44-46	46-48	48-50	52	54-56	58
EUR - WAIST - TO FIT	40	42	44	46	48	50
CHEST - TO FIT - INCHES	34-36"	36-38"	38-40"	42"	44-46"	48"
CHEST - TO FIT - CMS	86-91cm	91-96cm	96-101cm	107cm	112-117cm	122cm
WAIST - TO FIT - INCHES	30"	32"	34"	36"	38"	40"
WAIST - TO FIT - CMS	76cm	81cm	86cm	91cm	96cm	101cm
INSIDE LEG LENGTH - TO FIT REGULAR - INCHES	32"	32"	32"	32"	32"	32"
INSIDE LEG LENGTH - TO FIT REGULAR - CMS	81cm	81cm	81cm	81cm	81cm	81cm

MEN'S SIZES (SF600 JEANS)	W28"	W30"	W32"	W34"	W36"	W38"	W40"
EUR - WAIST - TO FIT	38	40	42	44	46	48	50
WAIST - TO FIT - CMS	71cm	76cm	81cm	86cm	91cm	96cm	101cm
INSIDE LEG LENGTH - TO FIT REGULAR - INCHES	32"	32"	32"	32"	32"	32"	32"
INSIDE LEG LENGTH - TO FIT REGULAR - CM	81cm	81cm	81cm	81cm	81cm	81cm	81cm
INSIDE LEG LENGTH - TO FIT LONG - INCHES	34"	34"	34"	34"	34"	34"	34"
INSIDE LEG LENGTH - TO FIT LONG - CM	86cm	86cm	86cm	86cm	86cm	86cm	86cm

WOMEN

WOMEN'S SIZES (EXCL. JEANS)	XXS	XS	S	M	L	XL	XXL
UK - TO FIT	6	8	10	12	14	16	18
EUR - TO FIT	34	36	38	40	42	44	46
CHEST - TO FIT - INCHES	28-30"	30-32"	32-34"	34-36"	36-38"	38-40"	40-42"
CHEST - TO FIT - CMS	71-76cm	76-81cm	81-86cm	86-91cm	91-96cm	96-101cm	101-107cm
WAIST - TO FIT - INCHES	24"	26"	28"	30"	32"	34"	36"
WAIST - TO FIT - CM	61cm	66cm	71cm	76cm	81cm	86cm	91cm
INSIDE LEG LENGTH - TO FIT REGULAR - INCHES	32"	32"	32"	32"	32"	32"	32"
INSIDE LEG LENGTH - TO FIT REGULAR - CM	81cm	81cm	81cm	81cm	81cm	81cm	81cm

WOMEN'S SIZES (SF600 JEANS)	W26"	W28"	W30"	W32"	W34"	W36"
UK - TO FIT	8	10	12	14	16	18
EUR - TO FIT	36	38	40	42	44	46
WAIST - TO FIT - CM	66cm	71cm	76cm	81cm	86cm	91cm
INSIDE LEG LENGTH - TO FIT REGULAR - INCHES	32"	32"	32"	32"	32"	32"
INSIDE LEG LENGTH - TO FIT REGULAR - CM	81cm	81cm	81cm	81cm	81cm	81cm
INSIDE LEG LENGTH - TO FIT LONG - INCHES	34"	34"	34"	34"	34"	34"
INSIDE LEG LENGTH - TO FIT LONG - CM	86cm	86cm	86cm	86cm	86cm	86cm

KIDS

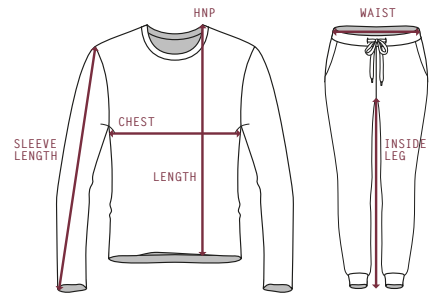
KIDS' AGES	3/4	4/6	5/6	7/8	7/9	9/10	10/12	11/12	13
HEIGHT - CMS	104cm	104-116cm	116cm	128cm	122-134cm	140cm	140-152cm	152cm	164cm
CHEST - INCHES	22"	22-24"	24"	26"	25-27"	28"	28.75-30.75"	30.5"	33"
CHEST - CMS	56cm	56-61cm	61cm	66cm	63-69cm	71cm	73-78cm	78cm	84cm
WAIST - INCHES	21"	21.25-22.5"	22"	23"	23-24.5"	24.5"	25.25-26.75"	26"	27.5"
WAIST - CMS	54cm	54-57cm	56cm	58cm	58-62cm	62cm	64-68cm	66cm	70cm

PLEASE NOTE THAT HEIGHT IS A BETTER INDICATION OF FIT THAN AGE.

THE FIT OF A GARMENT MAY VARY DEPENDING ON THE CUT, STYLE AND FABRIC.
IT IS ADVISABLE TO USE ACTUAL BODY MEASUREMENTS RATHER THAN MEASURING OVER CLOTHES.

GARMENT SPECIFICATIONS

ALL MEASUREMENTS ARE IN CM. CHEST IS MEASURED 2.5CM BELOW ARMHOLE.



S F MEN + UNISEX

SF028 MEN'S MICROFLEECE JACKET		S	M	L	XL	XXL		TOLS +/-	
CHEST		45.0	48.0	51.0	54.0	57.0		1.5	
LENGTH		70.0	72.0	74.0	76.0	78.0		2.0	
SLEEVE LENGTH		61.0	62.0	63.0	64.0	65.0		2.0	
SF042 MEN'S SHORT SLEEVED STRETCH POLO		S	M	L	XL	XXL		TOLS +/-	
CHEST		44.0	48.0	52.0	56.0	60.0		1.5	
LENGTH		65.5	69.5	73.5	76.5	79.5		2.0	
SLEEVE LENGTH		20.0	21.0	22.0	23.0	24.0		1.5	
SF044 MEN'S LONG SLEEVED STRETCH POLO		S	M	L	XL	XXL		TOLS +/-	
CHEST		46.0	49.0	52.0	55.0	59.0		1.5	
LENGTH		65.5	69.5	73.5	76.5	79.5		2.0	
SLEEVE LENGTH		60.0	62.0	63.0	64.0	65.0		1.5	
SF069 MEN'S RETRO SHORTS		S	M	L	XL			TOLS +/-	
WAIST		36.0	38.0	40.0	42.0			1.5	
INSIDE LEG		13.5	14.0	14.5	15.0			1.0	
NEW SF082 MEN'S TARTAN LOUNGE SHORTS		XS	S	M	L	XL	XXL	TOLS +/-	
	WAIST	34.0	37.0	40.0	43.0	46.0	49.0	1.5	
	INSIDE LEG	14.0	14.0	14.0	14.0	14.0	14.0	1.0	
SF083 MEN'S TARTAN LOUNGE PANTS		XS	S	M	L	XL	XXL	TOLS +/-	
	WAIST	34.0	37.0	40.0	43.0	46.0	49.0	1.5	
	INSIDE LEG	78.0	78.0	78.0	79.0	79.0	79.0	2.0	
SF121 MEN'S FEEL GOOD STRETCH T		XS	S	M	L	XL	XXL	TOLS +/-	
	CHEST	42.0	45.0	48.0	51.0	54.0	57.0	1.5	
	LENGTH	68.0	70.0	72.0	74.0	76.0	78.0	2.0	
	SLEEVE LENGTH	17.0	17.5	18.5	19.5	20.5	21.5	1.0	
SF122 MEN'S FEEL GOOD STRETCH V		S	M	L	XL	XXL		TOLS +/-	
	CHEST	45.0	48.0	51.0	54.0	57.0		1.5	
	LENGTH	70.0	72.0	74.0	76.0	78.0		2.0	
	SLEEVE LENGTH	17.5	18.5	19.5	20.5	21.5		1.5	
SF123 MEN'S FEEL GOOD STRETCH VEST		S	M	L	XL	XXL		TOLS +/-	
	CHEST	45.0	48.0	51.0	54.0	57.0		1.5	
	LENGTH	70.0	72.0	74.0	76.0	78.0		2.0	
SF124 MEN'S FEEL GOOD STRETCH LONG SLEEVED T		S	M	L	XL	XXL		TOLS +/-	
	CHEST	46.0	49.0	52.0	55.0	58.0		1.5	
	LENGTH	70.0	72.0	74.0	76.0	78.0		2.0	
	SLEEVE LENGTH	66.0	67.0	68.0	69.0	70.0		2.0	
SF125 MEN'S FEEL GOOD STRETCH ROLL NECK		S	M	L	XL	XXL		TOLS +/-	
	CHEST	45.0	48.0	51.0	54.0	57.0		1.5	
	LENGTH	71.0	73.0	75.0	77.0	79.0		2.0	
	SLEEVE LENGTH	67.0	68.0	69.0	70.0	71.0		2.0	
SF202 UNISEX STRIPED T		XXS	XS	S	M	L	XL	XXL	TOLS +/-
	CHEST	45.0	48.0	51.0	54.0	57.0	60.0	63.0	1.5
	LENGTH	68.0	70.0	72.0	74.0	76.0	78.0	80.0	2.0
	SLEEVE LENGTH	17.0	18.0	19.0	20.0	21.0	22.0	23.0	1.5
SF203 UNISEX WASHED BAND T		XXS	XS	S	M	L	XL	XXL	TOLS +/-
	CHEST	47.5	50.5	53.5	56.5	59.5	62.5	65.5	2.0
	LENGTH	66.0	68.0	70.0	72.0	74.0	76.0	78.0	2.5
	SLEEVE LENGTH	19.0	20.0	21.0	22.0	23.0	24.0	25.0	1.5
SF204 UNISEX LONG SLEEVED STRIPED T		XXS	XS	S	M	L	XL	XXL	TOLS +/-
	CHEST	43.0	46.0	49.0	52.0	55.0	58.0	61.0	2.0
	LENGTH	66.0	68.0	70.0	72.0	74.0	76.0	78.0	2.0
	SLEEVE LENGTH	62.0	63.0	64.0	65.0	66.0	67.0	68.0	2.0
SF232 MEN'S HIGH NECK SLASH ARMHOLE VEST		XS	S	M	L	XL	XXL	TOLS +/-	
	CHEST	47.0	50.0	53.0	56.0	59.0	62.0	1.5	
	LENGTH	74.0	75.5	77.0	78.5	79.5	80.5	2.0	
SF236 MEN'S MUSCLE VEST		S	M	L	XL	XXL		TOLS +/-	
	CHEST	47.0	50.0	53.0	56.0	59.0		1.5	
	LENGTH	72.0	74.0	76.0	78.0	80.0		2.0	
NEW SF253 UNISEX CONTRAST T		XXS	XS	S	M	L	XL	XXL	TOLS +/-
	CHEST	45.0	48.0	51.0	54.0	57.0	60.0	63.0	2.0
	LENGTH	69.0	71.0	73.0	75.0	77.0	79.0	81.0	2.0
	SLEEVE LENGTH	19.0	20.0	21.0	22.0	23.0	24.0	25.0	1.5

NEW	SF254 UNISEX SCOOP NECK T	XXS	XS	S	M	L	XL	XXL	TOLS +/-
	CHEST	46.0	48.0	51.0	54.0	57.0	60.0	63.0	2.0
	LENGTH	66.5	68.5	69.5	70.5	71.5	72.5	73.5	2.0
	SLEEVE LENGTH	18.0	19.0	20.0	21.0	22.0	23.0	24.0	1.5
	SF258 MEN'S LONGLINE T WITH DIPPED HEM			S	M	L	XL	XXL	TOLS +/-
	CHEST			51.0	54.0	57.0	60.0	63.0	1.5
	LENGTH (FRONT)			81.0	83.0	85.0	87.0	89.0	2.0
	LENGTH (BACK)			85.0	87.0	89.0	91.0	93.0	2.0
	SLEEVE LENGTH			20.5	21.5	22.5	23.5	24.5	1.5
NEW	SF259 MEN'S LONG SLEEVED LONGLINE T WITH DIPPED HEM			S	M	L	XL	XXL	TOLS +/-
	CHEST			51.0	54.0	57.0	60.0	63.0	2.0
	LENGTH (FRONT)			81.0	83.0	85.0	87.0	89.0	2.0
	LENGTH (BACK)			84.0	86.0	88.0	90.0	92.0	2.0
	SLEEVE LENGTH			62.0	63.0	64.0	65.0	66.0	2.0
	SF271 MEN'S LONG SLEEVED BASEBALL T		XS	S	M	L	XL	XXL	TOLS +/-
	CHEST		46.5	49.5	52.5	55.5	58.5	61.5	1.5
	LENGTH		68.5	70.5	72.5	74.5	76.5	78.5	2.0
	SLEEVE LENGTH (FROM HNP)		75.5	78.5	80.0	81.5	83.0	84.5	2.0
NEW	SF423 UNISEX CONTRAST JOGGERS	XXS	XS	S	M	L	XL	XXL	TOLS +/-
	WAIST	33.0	35.0	37.0	39.0	41.0	43.0	45.0	1.5
	INSIDE LEG	70.0	71.0	71.0	71.0	72.0	72.0	72.0	2.0
	SF425 MEN'S SLIM FIT CUFFED JOGGERS			S	M	L	XL	XXL	TOLS +/-
	WAIST			37.5	39.5	41.5	43.5	45.5	1.5
	INSIDE LEG			75.0	75.0	76.0	76.0	76.0	2.0
	SF440 MEN'S FASHION POLO			S	M	L	XL	XXL	TOLS +/-
	CHEST			48.0	51.0	54.0	57.0	60.0	1.5
	LENGTH			71.5	74.0	76.5	79.0	81.5	2.0
	SLEEVE LENGTH			23.0	24.0	25.0	26.0	27.0	1.5
	SF470 UNISEX ALL-IN-ONE		XXS/XS		S/M		L/XL		TOLS +/-
	CHEST		49.0		55.0		61.0		1.5
	LENGTH		146.0		154.0		162.0		3.0
	SLEEVE LENGTH		64.0		66.5		69.0		2.0
	WAIST		48.0		54.0		60.0		1.5
	INSIDE LEG		71.0		72.0		73.0		2.0
	SF511 UNISEX BOMBER ZIP-THROUGH SWEAT		XS	S	M	L	XL	XXL	TOLS +/-
	CHEST		48.0	51.0	54.0	57.0	60.0	63.0	1.5
	LENGTH		68.0	70.5	73.0	75.5	78.0	80.5	2.0
	SLEEVE LENGTH		65.0	66.5	68.0	69.5	71.0	72.5	2.0
	SF512 UNISEX BASEBALL JACKET WITH DETACHABLE HOOD		XS	S	M	L	XL	XXL	TOLS +/-
	CHEST		50.5	53.0	55.5	58.0	60.5	63.0	1.5
	LENGTH		64.0	67.0	70.0	74.0	76.0	78.0	2.0
	SLEEVE LENGTH		59.0	61.0	63.0	65.0	66.0	67.0	2.0
	SF514 UNISEX DROP SHOULDER SLOGAN TOP	XXS	XS	S	M	L	XL	XXL	TOLS +/-
	CHEST	49.5	52.5	55.5	58.5	61.5	64.5	67.5	1.5
	LENGTH (FRONT)	65.0	67.0	69.0	70.0	72.0	74.0	76.0	2.0
	LENGTH (BACK)	70.0	72.0	74.0	76.0	77.0	79.0	81.0	2.0
	SLEEVE LENGTH	43.0	44.0	45.0	46.0	47.0	47.5	48.0	1.5
	SHOULDER TO SHOULDER	76.0	78.0	80.0	82.0	84.0	86.0	88.0	2.0
	SF520 UNISEX WASHED TOUR SWEAT	XXS	XS	S	M	L	XL	XXL	TOLS +/-
	CHEST	53.0	56.0	59.0	62.0	65.0	68.0	71.0	2.0
	LENGTH	66.0	68.0	70.0	72.0	74.0	76.0	78.0	2.0
	SLEEVE LENGTH	61.0	62.0	63.0	64.0	65.0	66.0	67.0	2.0
	SF523 UNISEX CONTRAST SWEAT	XXS	XS	S	M	L	XL	XXL	TOLS +/-
	CHEST	53.0	56.0	59.0	62.0	65.0	68.0	71.0	2.0
	LENGTH	66.0	68.0	70.0	72.0	74.0	76.0	78.0	2.0
	SLEEVE LENGTH (FROM HNP)	72.5	75.0	77.5	80.0	82.5	85.0	87.5	2.0
	SF525 UNISEX SLIM FIT SWEAT	XXS	XS	S	M	L	XL	XXL	TOLS +/-
	CHEST	44.0	47.0	50.0	53.0	56.0	59.0	62.0	1.5
	LENGTH	68.0	70.0	72.0	74.0	76.0	78.0	80.0	2.0
	SLEEVE LENGTH	76.0	78.0	80.0	82.0	84.0	86.0	88.0	2.0
	SF526 UNISEX SLIM FIT ZIP-THROUGH HOODY	XXS	XS	S	M	L	XL	XXL	TOLS +/-
	CHEST	45.0	48.0	51.0	54.0	57.0	60.0	63.0	1.5
	LENGTH	68.0	70.0	72.0	74.0	76.0	78.0	80.0	2.0
	SLEEVE LENGTH (FROM HNP)	74.0	76.0	78.0	80.0	82.0	84.0	86.0	2.0
	SF527 UNISEX OVERSIZED HOODY	XXS	XS	S	M	L	XL	XXL	TOLS +/-
	CHEST	54.0	57.0	60.0	63.0	66.0	69.0	72.0	2.0
	LENGTH FROM HPS	72.0	74.0	76.0	78.0	80.0	82.0	84.0	2.0
	SLEEVE LENGTH (FROM SHOULDER)	56.0	57.0	58.0	59.0	60.0	61.0	62.0	1.5
	SF560 MEN'S BRUSHED CHECK CASUAL SHIRT			S	M	L	XL	XXL	TOLS +/-
	CHEST			50.0	53.0	56.0	59.0	62.0	1.5
	LENGTH			76.0	78.0	80.0	82.0	84.0	2.0
	SLEEVE LENGTH			65.0	66.0	67.0	68.0	69.0	2.0
	SF600 MEN'S STRETCH SKINNI JEANS	W28"	W30"	W32"	W34"	W36"	W38"	W40"	TOLS +/-
	WAIST	37.0	39.5	42.0	44.5	47.0	49.5	52.0	1.5
	REGULAR INSIDE LEG	76.0	76.0	76.0	76.0	76.0	76.0	76.0	2.0
	LONG INSIDE LEG	82.0	82.0	82.0	82.0	82.0	82.0	82.0	2.0

GARMENT SPECIFICATIONS

S F W O M E N

SK028 WOMEN'S MICROFLEECE JACKET	XS	S	M	L	XL	XXL	TOLS +/-
CHEST	40.0	43.0	46.0	49.0	52.0	55.0	1.5
LENGTH	60.0	62.0	64.0	66.0	68.0	70.0	2.0
SLEEVE LENGTH (FROM HNP)	71.0	72.0	73.0	74.0	75.0	76.0	2.0
SK042 WOMEN'S SHORT SLEEVED STRETCH POLO		S	M	L	XL		TOLS +/-
CHEST		40.0	43.0	46.0	49.0		1.5
LENGTH		60.0	62.0	64.0	66.0		1.5
SLEEVE LENGTH		15.0	15.5	16.0	16.5		1.0
SK044 WOMEN'S LONG SLEEVED STRETCH POLO		S	M	L	XL		TOLS +/-
CHEST		40.0	43.0	46.0	49.0		1.5
LENGTH		60.0	62.0	64.0	66.0		1.5
SLEEVE LENGTH		58.0	60.0	62.0	64.0		1.5
SK062 WOMEN'S SHORTS		S	M	L			TOLS +/-
WAIST		35.0	38.0	41.0			1.5
INSIDE LEG		6.0	6.0	6.0			1.0
SK064 WOMEN'S LEGGINGS	XS	S	M	L	XL		TOLS +/-
WAIST	26.0	29.0	32.0	35.0	38.0		1.5
INSIDE LEG	70.0	70.0	70.0	70.0	70.0		2.0
SK068 WOMEN'S 3/4 LENGTH LEGGINGS	XS	S	M	L	XL	XXL	TOLS +/-
WAIST	27.5	30.5	33.5	36.5	39.5	42.5	1.5
INSIDE LEG	50.0	52.0	54.0	56.0	58.0	60.0	1.5
SK069 WOMEN'S RETRO SHORTS	XS	S	M	L	XL	XXL	TOLS +/-
WAIST	33.0	36.0	39.0	42.0	45.0	48.0	1.5
INSIDE LEG	5.0	5.0	5.0	5.0	5.0	5.0	1.0
SK082 WOMEN'S TARTAN FRILL LOUNGE SHORTS	XXS	XS	S	M	L	XL	TOLS +/-
WAIST	32.0	35.0	38.0	41.0	44.0	47.0	1.5
INSIDE LEG	6.0	6.0	6.0	6.0	6.0	6.0	1.0
SK083 WOMEN'S TARTAN LOUNGE PANTS	XXS	XS	S	M	L	XL	TOLS +/-
WAIST	32.0	35.0	38.0	41.0	44.0	47.0	1.5
INSIDE LEG	77.0	77.0	77.0	78.0	78.0	78.0	2.0
SK104 WOMEN'S STRETCH VEST DRESS		S	M	L	XL		TOLS +/-
CHEST		38.0	41.0	44.0	47.0		1.5
LENGTH		82.0	84.0	86.0	88.0		2.0
SK121 WOMEN'S FEEL GOOD STRETCH T	XS	S	M	L	XL	XXL	TOLS +/-
CHEST	39.5	41.5	44.5	47.5	51.5	55.5	1.5
LENGTH	61.0	62.0	63.0	64.0	65.0	66.0	1.5
SLEEVE LENGTH	15.0	15.0	15.5	16.0	16.0	16.0	1.0
SK122 WOMEN'S FEEL GOOD STRETCH V	XS	S	M	L	XL	XXL	TOLS +/-
CHEST	39.5	41.5	44.5	47.5	51.5	55.5	1.5
LENGTH	61.0	62.0	63.0	64.0	65.0	66.0	1.5
SLEEVE LENGTH	15.0	15.0	15.5	16.0	16.0	16.0	1.0
SK123 WOMEN'S FEEL GOOD STRETCH VEST	XS	S	M	L	XL	XXL	TOLS +/-
CHEST	37.0	40.0	43.0	46.0	49.0	52.0	1.5
LENGTH	61.0	62.0	63.0	64.0	65.0	66.0	1.5
SK124 WOMEN'S FEEL GOOD STRETCH LONG SLEEVED T	XS	S	M	L	XL	XXL	TOLS +/-
CHEST	40.0	43.0	46.0	49.0	52.5	56.5	1.5
LENGTH	61.0	62.0	63.0	64.0	65.0	66.0	1.5
SLEEVE LENGTH	58.0	58.0	59.0	59.0	60.0	60.0	1.5
SK125 WOMEN'S FEEL GOOD STRETCH ROLL NECK	XS	S	M	L	XL	XXL	TOLS +/-
CHEST	39.0	42.0	45.0	48.0	51.0	54.0	1.5
LENGTH	61.0	62.0	63.0	64.0	65.0	66.0	1.5
SLEEVE LENGTH	59.0	59.0	60.0	60.0	61.0	61.0	1.5
SK126 WOMEN'S FEEL GOOD STRETCH SPAGHETTI VEST	XS	S	M	L	XL		TOLS +/-
CHEST	37.0	40.0	43.0	46.0	49.0		1.5
LENGTH	47.0	48.0	49.0	50.0	51.0		1.5
SK127 WOMEN'S FEEL GOOD STRETCH CONTRAST STRAPPY VEST	XS	S	M	L			TOLS +/-
CHEST	34.0	37.0	40.0	43.0			1.5
LENGTH	46.0	47.0	48.0	49.0			1.5
SK150 WOMEN'S STRETCH RACER-BACK TANK		S	M	L			TOLS +/-
CHEST		28.0	31.0	34.0			+/-1.5
LENGTH		61.0	63.0	65.0			+/-1.5
SK170 WOMEN'S HIGH NECK CROP VEST	XS	S	M	L			TOLS +/-
CHEST	34.0	37.0	40.0	43.0			1.5
LENGTH	46.0	47.0	48.0	49.0			1.5
SK213 WOMEN'S SLOUNGE T		S	M	L	XL		TOLS +/-
CHEST		43.0	46.0	49.0	53.0		1.5
LENGTH		66.0	66.0	67.0	68.0		2.0
SLEEVE LENGTH (FROM HNP)		15.0	15.5	16.0	16.5		1.0

SK232 WOMEN'S HIGH NECK SLASH ARMHOLE VEST	XS	S	M	L	XL	XXL	TOLS +/-
CHEST	42.0	45.0	48.0	51.0	53.0	55.0	1.5
LENGTH	59.0	62.0	65.0	68.0	71.0	74.0	2.0
SK233 WOMEN'S DROP TAIL T	XS	S	M	L	XL	XXL	TOLS +/-
CHEST	44.0	46.0	48.0	50.0	52.0	54.0	1.5
LENGTH (FRONT)	53.0	55.0	57.0	59.0	61.0	63.0	1.5
LENGTH (BACK)	67.5	69.5	71.5	73.5	75.5	77.5	2.0
SLEEVE LENGTH	20.0	21.0	22.0	23.0	24.0	25.0	1.5
SK234 WOMEN'S SLOUNGE VEST	XS	S	M	L	XL	XXL	TOLS +/-
CHEST	37.0	40.0	43.0	46.0	49.0	52.0	1.5
LENGTH	62.5	64.0	65.5	67.0	68.5	70.0	2.0
SK235 WOMEN'S WORKOUT CROPPED TOP	XS	S	M	L			TOLS +/-
CHEST	29.0	32.0	35.0	37.0			1.5
LENGTH	29.0	31.0	33.0	34.0			1.5
SK236 WOMEN'S FASHION CROP TOP	XS	S	M	L			TOLS +/-
CHEST	34.0	37.0	40.0	43.0			1.5
LENGTH	31.0	32.5	34.0	35.5			1.5
SK237 WOMEN'S CROPPED BOXY T	XXS	XS	S	M	L	XL	TOLS +/-
CHEST	45.0	48.0	51.0	54.0	57.0	60.0	1.5
LENGTH	48.0	49.0	50.0	50.0	51.0	51.0	1.5
SLEEVE LENGTH	17.0	18.0	19.0	20.0	21.0	22.0	1.0
SK240 WOMEN'S REVERSIBLE WORKOUT VEST	XS	S	M	L	XL		TOLS +/-
CHEST	34.0	37.0	40.0	43.0	46.0		1.5
LENGTH	61.0	62.0	63.0	64.0	65.0		2.0
SK241 WOMEN'S FASHION WORKOUT VEST	XS	S	M	L	XL	XXL	TOLS +/-
CHEST	39.0	42.0	45.0	48.0	51.0	54.0	1.5
LENGTH	60.0	61.5	63.0	64.5	66.0	67.5	2.0
SK257 WOMEN'S T SHIRT DRESS		S	M	L	XL		TOLS +/-
CHEST		43.0	46.0	49.0	52.0		1.5
LENGTH		82.0	84.0	86.0	88.0		2.0
SLEEVE LENGTH		15.0	15.5	16.0	16.5		1.0
SK263 WOMEN'S SLOUNGE TOP	XS	S	M	L	XL		TOLS +/-
CHEST	54.0	57.0	60.0	63.0	66.0		1.5
LENGTH (FRONT)	66.0	67.0	68.0	69.0	70.0		2.0
LENGTH (BACK)	67.0	68.0	69.0	70.0	71.0		2.0
SLEEVE LENGTH	44.0	45.0	46.0	47.0	48.0		1.5
SK271 WOMEN'S LONG SLEEVED BASEBALL T	XS	S	M	L	XL		TOLS +/-
CHEST	41.5	43.5	46.5	49.5	53.5		1.5
LENGTH (FRONT)	58.0	59.0	60.0	61.0	62.0		2.0
SLEEVE LENGTH (FROM HNP)	66.5	67.5	68.5	69.5	70.5		2.0
SK424 WOMEN'S REVERSIBLE WORKOUT LEGGINGS	XS	S	M	L	XL		TOLS +/-
WAIST	27.5	29.5	31.5	33.5	35.5		1.5
INSIDE LEG	70.5	70.5	70.5	70.5	70.5		2.0
SK425 WOMEN'S SLIM FIT CUFFED JOGGERS	XS	S	M	L	XL		TOLS +/-
WAIST	33.5	36.0	38.5	41.0	43.5		1.5
INSIDE LEG	75.5	76.5	76.5	77.5	77.5		2.0
NEW SK426 WOMEN'S FASHION LEGGINGS	XS	S	M	L	XL		TOLS +/-
WAIST	29.0	32.0	35.0	38.0	41.0		1.5
INSIDE LEG	78.5	78.5	78.5	78.5	78.5		2.0
NEW SK427 WOMEN'S FASHION CYCLING SHORTS	XS	S	M	L	XL		TOLS +/-
WAIST	29.0	32.0	35.0	38	41.0		1.5
INSIDE LEG	18.0	18.0	18.0	18.0	18.0		1.0
SK436 WOMEN'S FASHION BRIEFS	XS	S	M	L			TOLS +/-
WAIST	34.5	37.5	40.5	43.5			1.5
LENGTH (FRONT)	19.5	20.5	21.5	22.5			1.5
SK440 WOMEN'S FASHION POLO	XS	S	M	L	XL		TOLS +/-
CHEST	38.0	41.0	43.0	46.0	49.0		1.5
LENGTH	60.0	62.0	64.0	66.0	68.0		2.0
SLEEVE LENGTH	13.0	14.0	15.0	16.0	17.0		1.0
SK513 WOMEN'S SLOUNGE SWEAT		S	M	L	XL		TOLS +/-
CHEST		52.0	56.0	59.0	62.0		1.5
LENGTH		60.0	62.0	64.0	66.0		2.0
SLEEVE LENGTH		69.0	70.0	71.0	72.0		2.0
SK515 WOMEN'S CROPPED SLOUNGE SWEAT	XS	S	M	L	XL		TOLS +/-
CHEST	53.0	56.0	59.0	62.0	65.0		1.5
LENGTH	49.5	50.5	51.5	52.5	53.5		2.0
SLEEVE LENGTH	53.0	54.0	55.0	56.0	57.0		2.0
NEW SK516 WOMEN'S CROPPED SLOUNGE HOODY	XS	S	M	L	XL		TOLS +/-
CHEST	53.5	56.0	58.5	61.0	63.5		2.0
LENGTH	49.5	50.5	51.5	52.5	53.5		1.5
SLEEVE LENGTH	53.0	54.0	55.0	56.0	57.0		1.5
SK600 WOMEN'S STRETCH SKINNI JEANS	W26"	W28"	W30"	W32"	W34"	W36"	TOLS +/-
WAIST	32.5	35.0	37.5	40.0	42.5	45.0	1.5
REGULAR INSIDE LEG	72.0	72.0	72.0	72.0	72.0	72.0	2.0
LONG INSIDE LEG	78.0	78.0	78.0	78.0	78.0	78.0	2.0

S F M I N N I

SM016 KIDS' TANK VEST	AGE (YEARS)	4-6	7-9	10-12			TOLS +/-	
CHEST		29.0	31.0	33.0			1.5	
LENGTH		43.0	46.0	49.0			1.5	
SM062 KIDS' SHORTS	AGE (YEARS)	5-6	7-8	9-10	11-12			TOLS +/-
WAIST		27.0	30.0	33.0	36.0			1.5
INSIDE LEG		5.0	5.0	5.0	5.0			1.0
SM064 KIDS' LEGGINGS	AGE (YEARS)	3-4	5-6	7-8	9-10	11-12	TOLS +/-	
WAIST		23.0	25.0	27.0	30.0	33.0	1.5	
INSIDE LEG		40.0	45.5	51.0	56.5	62.0	1.5	
SM069 KIDS' RETRO SHORTS	AGE (YEARS)	5-6	7-8	9-10	11-12			TOLS +/-
WAIST		25.0	28.0	31.0	34.0			1.5
INSIDE LEG		3.0	3.0	3.5	3.5			1.0
SM083 KIDS TARTAN LOUNGE PANTS	AGE (YEARS)	5-6	7-8	9-10	11-12	13	TOLS +/-	
WAIST		25.0	28.0	31.0	34.0	37.0	1.5	
INSIDE LEG		25.0	37.0	29.0	31.0	33.0	1.5	
SM121 KIDS' FEEL GOOD STRETCH T	AGE (YEARS)	3-4	5-6	7-8	9-10	11-12	TOLS +/-	
CHEST		30.0	33.0	36.0	39.0	42.0	1.5	
LENGTH		40.0	44.0	48.0	52.0	56.0	1.5	
SLEEVE LENGTH		12.5	13.5	14.5	15.5	16.5	1.0	
SM123 KIDS' FEEL GOOD STRETCH VEST	AGE (YEARS)	5-6	7-8	9-10	11-12			TOLS +/-
CHEST		32.0	35.0	38.0	41.0			1.5
LENGTH		44.0	48.0	52.0	56.0			1.5
NEW SM126 KIDS FEEL GOOD STRETCH SPAGHETTI VEST	AGE (YEARS)	5-6	7-8	9-10	11-12			TOLS +/-
CHEST		29.9	32.0	35.0	38.0			1.5
LENGTH		34.0	38.0	42.0	46.0			1.5
SM127 KIDS' FEEL GOOD STRETCH CONTRAST STRAPPY VEST	AGE (YEARS)	5-6	7-8	9-10	11-12			TOLS +/-
CHEST		26.0	29.0	32.0	35.0			1.5
LENGTH		38.0	39.0	40.0	41.0			1.5
SM170 KIDS' HIGH NECK CROP VEST	AGE (YEARS)	5-6	7-8	9-10	11-12			TOLS +/-
CHEST		26.0	29.0	32.0	35.0			1.5
LENGTH		38.5	39.5	40.5	41.5			1.5
SM202 KIDS' STRIPED T	AGE (YEARS)	5-6	7-8	9-10	11-12			TOLS +/-
CHEST		34.0	37.0	40.0	43.0			1.5
LENGTH		44.0	48.0	52.0	56.0			1.5
SLEEVE LENGTH		13.5	14.5	15.5	16.5			1.0
SM236 KIDS' FASHION CROP TOP	AGE (YEARS)	5-6	7-8	9-10	11-12			TOLS +/-
CHEST		26.0	29.0	32.0	35.0			1.5
LENGTH		25.5	27.0	28.5	30.0			1.5
SM241 KIDS' FASHION WORKOUT VEST	AGE (YEARS)	5-6	7-8	9-10	11-12			TOLS +/-
CHEST		29.0	32.0	35.0	38.0			1.5
LENGTH		47.0	49.5	52.0	54.5			1.5
SM258 KIDS' LONGLINE T WITH DIPPED HEM	AGE (YEARS)	5-6	7-8	9-10	11-12			TOLS +/-
CHEST		34.0	37.0	40.0	43.0			1.5
LENGTH (FRONT)		51.0	55.0	59.0	63.0			1.5
LENGTH (BACK)		53.5	57.5	61.5	65.5			1.5
SLEEVE LENGTH		13.5	14.5	15.5	16.5			1.0
SM271 KIDS' LONG SLEEVED BASEBALL T	AGE (YEARS)	5-6	7-8	9-10	11-12			TOLS +/-
CHEST		33.0	36.0	39.0	42.0			1.5
LENGTH		46.0	49.0	52.0	55.0			1.5
SLEEVE LENGTH (FROM HNP)		48.0	51.5	55.0	57.5			1.5
SM424 KIDS' REVERSIBLE WORKOUT LEGGINGS	AGE (YEARS)	5-6	7-8	9-10	11-12			TOLS +/-
WAIST		25.0	27.0	30.0	33.0			1.5
INSIDE LEG		46.5	52.0	57.5	63.0			1.5
SM425 KIDS' SLIM FIT CUFFED JOGGERS	AGE (YEARS)	5-6	7-8	9-10	11-12			TOLS +/-
WAIST		25.0	28.0	31.0	34.0			1.5
INSIDE LEG		47.0	53.0	59.0	65.0			1.5
NEW SM426 KIDS' FASHION LEGGINGS	AGE (YEARS)	5-6	7-8	9-10	11-12			TOLS +/-
WAIST		25.0	27.0	30.0	33.0			1.5
INSIDE LEG		45.5	51.0	56.5	62.0			1.5
NEW SM427 KIDS' FASHION CYCLING SHORTS	AGE (YEARS)	5-6	7-8	9-10	11-12			TOLS +/-
WAIST		25.0	27.0	30.0	33.0			1.5
INSIDE LEG		13.0	13.0	13.0	13.0			1.0
SM470 KIDS' ALL-IN-ONE	AGE (YEARS)	3-4	5-6	7-8	9-10	11-12	13	TOLS +/-
CHEST		34.0	37.0	40.0	43.0	46.0	50.0	1.5
LENGTH		90.0	101.0	112.0	123.0	134.0	145.0	3.0
SLEEVE LENGTH		44.0	46.5	49.0	51.5	54.0	56.5	1.5
WAIST		37.0	40.0	43.0	46.0	49.0	52.0	1.5
INSIDE LEG		38.0	44.0	50.0	56.0	62.0	68.0	1.5

SM514 KIDS' DROP SHOULDER SLOGAN TOP	AGE (YEARS)	5-6	7-8	9-10	11-12	TOLS +/-
CHEST		38.0	41.0	44.0	47.0	1.5
LENGTH (FRONT)		48.0	52.0	56.0	60.0	1.5
LENGTH (BACK)		51.0	55.0	59.0	63.0	1.5
SLEEVE LENGTH		33.0	35.0	37.0	39.0	1.5
SHOULDER TO SHOULDER		55.0	57.0	59.0	61.0	1.5

SM526 KIDS' ZIP-THROUGH HOODY	AGE (YEARS)	5-6	7-8	9-10	11-12	TOLS +/-
CHEST		36.0	39.0	42.0	45.0	1.5
LENGTH		46.0	50.0	54.0	58.0	1.5
SLEEVE LENGTH		53.0	56.0	59.0	62.0	1.5



SM127 KIDS' FEEL GOOD STRETCH CONTRAST STRAPPY VEST (PAGE 58)

SF028
PAGE 51



MEN'S MICROFLEECE JACKET
SIZES: S-XXL



SF042
PAGE 40



MEN'S SHORT SLEEVED
STRETCH POLO
SIZES: S-XXL



SF044
PAGE 41



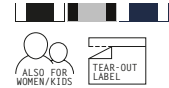
MEN'S LONG SLEEVED STRETCH POLO
SIZES: S-XXL



SF069
PAGE 33



MEN'S RETRO SHORTS
WITH POCKETS
SIZES: S-XL



SF082
PAGE 55



MEN'S TARTAN LOUNGE SHORTS
SIZES: XS-XXL



SF083
PAGE 54



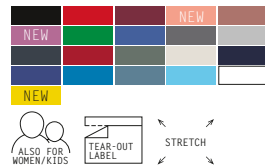
MEN'S TARTAN LOUNGE PANTS
SIZES: XS-XXL



SF121
PAGE 9



MEN'S FEEL GOOD STRETCH T
SIZES: XS-XXL (XS-BLACK + WHITE)



SF122
PAGE 10



MEN'S FEEL GOOD STRETCH V
SIZES: S-XXL



SF123
PAGE 12



MEN'S FEEL GOOD STRETCH VEST
SIZES: S-XXL



SF124
PAGE 11



MEN'S FEEL GOOD STRETCH
LONG SLEEVED T
SIZES: S-XXL



SF125
PAGE 11



MEN'S FEEL GOOD STRETCH
ROLL NECK
SIZES: S-XXL



UNISEX

SF202
PAGE 16



UNISEX STRIPED T
SIZES: XXS-XXL



UNISEX
SF203
 PAGE 18



UNISEX WASHED BAND T
 SIZES: XXS-XXL

BRAND FREE

UNISEX
SF204
 PAGE 16



UNISEX LONG SLEEVED STRIPED T
 SIZES: XXS-XXL

TEAR-OUT LABEL

SF232
 PAGE 27



MEN'S HIGH NECK SLASH ARMHOLE VEST
 SIZES: XS-XXL

ALSO FOR WOMEN

TEAR-OUT LABEL

SF236
 PAGE 26



MEN'S MUSCLE VEST
 SIZES: S-XXL

TEAR-OUT LABEL


UNISEX NEW
SF253
 PAGE 19



UNISEX CONTRAST T
 SIZES: XXS-XXL

TEAR-OUT LABEL

UNISEX NEW
SF254
 PAGE 21



UNISEX SCOOP NECK T
 SIZES: XXS-XXL

TEAR-OUT LABEL

SF258
 PAGE 25




MEN'S LONGLINE T WITH DIPPED HEM
 SIZES: S-XXL

ALSO FOR KIDS

TEAR-OUT LABEL

NEW
SF259
 PAGE 25



MEN'S LONG SLEEVED LONGLINE T WITH DIPPED HEM
 SIZES: S-XXL

TEAR-OUT LABEL

SF271
 PAGE 17



MEN'S LONG SLEEVED BASEBALL T
 SIZES: XS-XXL

ALSO FOR WOMEN/KIDS

TEAR-OUT LABEL

UNISEX NEW
SF423
 PAGE 47



UNISEX CONTRAST JOGGERS
 SIZES: XXS-XXL

TEAR-OUT LABEL

SF425
 PAGES 44-45



MEN'S SLIM FIT CUFFED JOGGERS
 SIZES: S-XXL

ALSO FOR WOMEN/KIDS

TEAR-OUT LABEL

SF440
 PAGE 39



MEN'S FASHION POLO
 SIZES: S-XXL

ALSO FOR WOMEN

TEAR-OUT LABEL

UNISEX SF470
PAGE 52



UNISEX ALL-IN-ONE
SIZES: XXS/XS, S/M, L/XL




UNISEX SF511
PAGE 50




UNISEX BOMBER ZIP-THROUGH SWEAT
SIZES: XS-XXL




UNISEX SF512
PAGE 50



UNISEX BASEBALL JACKET
WITH DETACHABLE HOOD
SIZES: XS-XXL

UNISEX SF514
PAGE 20



UNISEX DROP SHOULDER SLOGAN TOP
SIZES: XXS-XXL





UNISEX SF520
PAGE 48





UNISEX WASHED TOUR SWEAT
SIZES: XXS-XXL




UNISEX SF523
PAGE 47



UNISEX CONTRAST SWEAT
SIZES: XXS-XXL


UNISEX SF525
PAGES 44-45





UNISEX SLIM FIT SWEAT
SIZES: XXS-XXL




UNISEX SF526
PAGES 44-45



UNISEX SLIM FIT
ZIP-THROUGH HOODY
SIZES: XXS-XXL

UNISEX SF527
PAGE 46



UNISEX OVERSIZED HOODY
SIZES: XXS-XXL




SF560
PAGE 36



MEN'S BRUSHED CHECK
CASUAL SHIRT
SIZES: S-XXL




SF600
PAGE 36-37



MEN'S STRETCH SKINNI JEANS
SIZES:
W28"/EUR 38 - W40"/EUR 50
REG & LONG LENGTHS

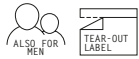



SF WOMEN

SK028
PAGE 51



WOMEN'S MICROFLEECE JACKET
SIZES: XS-XXL



SK042
PAGE 40



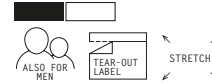
WOMEN'S SHORT SLEEVED
STRETCH POLO
SIZES: S-XL



SK044
PAGE 41



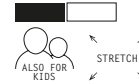
WOMEN'S LONG SLEEVED
STRETCH POLO
SIZES: S-XL



SK062
PAGE 32



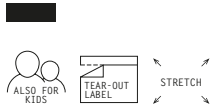
WOMEN'S SHORTS
SIZES: S-L



SK064
PAGE 34



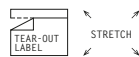
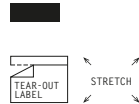
WOMEN'S LEGGINGS
SIZES: XS-XXL



SK068
PAGE 34



WOMEN'S 3/4 LENGTH LEGGINGS
SIZES: XS-XXL



SK069
PAGE 33



WOMEN'S RETRO SHORTS
SIZES: XS-XXL



SK082
PAGE 55



WOMEN'S TARTAN FRILL
LOUNGE SHORTS
SIZES: XXS-XL



SK083
PAGE 54



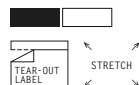
WOMEN'S TARTAN LOUNGE PANTS
SIZES: XXS-XL



SK104
PAGE 24



WOMEN'S STRETCH VEST DRESS
SIZES: S-XL



SK121
PAGE 9



WOMEN'S FEEL GOOD STRETCH T
SIZES: XS-XXL



SK122
PAGE 10



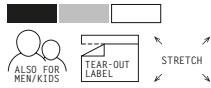
WOMEN'S FEEL GOOD STRETCH V
SIZES: XS-XXL



SK123
PAGE 12



WOMEN'S FEEL GOOD STRETCH VEST
SIZES: XS-XXL



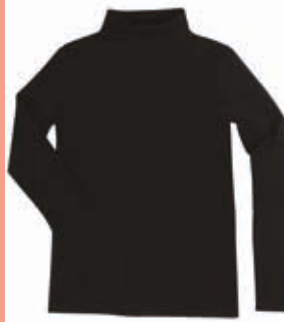
SK124
PAGE 11



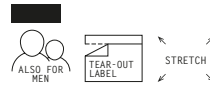
WOMEN'S FEEL GOOD STRETCH
LONG SLEEVED T
SIZES: XS-XXL



SK125
PAGE 11



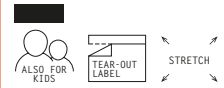
WOMEN'S FEEL GOOD STRETCH
ROLL NECK
SIZES: XS-XXL



SK126
PAGE 13



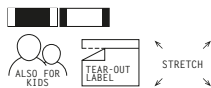
WOMEN'S FEEL GOOD STRETCH
SPAGHETTI VEST
SIZES: XS-XL



SK127
PAGE 13



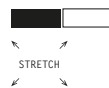
WOMEN'S FEEL GOOD STRETCH
CONTRAST STRAPPY VEST
SIZES: XS-L



SK150
PAGE 29



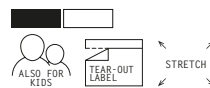
WOMEN'S STRETCH RACER-BACK TANK
SIZES: S-L



SK170
PAGE 28



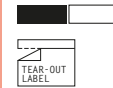
WOMEN'S HIGH NECK CROP VEST
SIZES: XS-L



SK213
PAGE 22



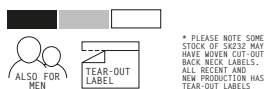
WOMEN'S SLOUNGE T
SIZES: S-XL



SK232
PAGE 27



WOMEN'S HIGH NECK
SLASH ARMHOLE VEST
SIZES: XS-XXL



SK233
PAGE 23



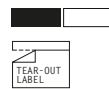
WOMEN'S DROP TAIL T
SIZES: XS-XXL



SK234
PAGE 26



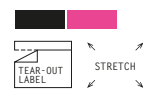
WOMEN'S SLOUNGE VEST
SIZES: XS-XXL



SK235
PAGE 31



WOMEN'S WORKOUT CROPPED TOP
SIZES: XS-L



* PLEASE NOTE SOME STOCK OF SK123 MAY HAVE MOVED CUT-OUT BACK NECK LABELS - ALL RECENT AND NEW PRODUCTION HAS TEAR-OUT LABELS

SK236
PAGES 28-29



WOMEN'S FASHION CROP TOP
SIZES: XS-L

NEW

ALSO FOR KIDS

TEAR-OUT LABEL

STRETCH

SK237
PAGE 23



WOMEN'S CROPPED BOXY T
SIZES: XXS-XL

TEAR-OUT LABEL

SK240
PAGE 30



REVERSIBLE

WOMEN'S REVERSIBLE WORKOUT VEST
SIZES: XS-XL

BRAND FREE

STRETCH

SK241
PAGE 31



WOMEN'S FASHION WORKOUT VEST
SIZES: XS-XXL

ALSO FOR KIDS

TEAR-OUT LABEL

STRETCH

SK257
PAGE 24



WOMEN'S T-SHIRT DRESS
SIZES: S-XL

TEAR-OUT LABEL

SK263
PAGE 22



WOMEN'S SLOUNGE TOP
SIZES: XS-XL

TEAR-OUT LABEL

SK271
PAGE 17



WOMEN'S LONG SLEEVED BASEBALL T
SIZES: XS-XL

ALSO FOR MEN/KIDS

TEAR-OUT LABEL

SK424
PAGE 30 + 34



REVERSIBLE

WOMEN'S REVERSIBLE WORKOUT LEGGINGS
SIZES: XS-XL

ALSO FOR KIDS

TEAR-OUT LABEL

STRETCH

SK425
PAGES 44-45



WOMEN'S SLIM FIT CUFFED JOGGERS
SIZES: XS-XL

ALSO FOR MEN/KIDS

TEAR-OUT LABEL

NEW SK426
PAGE 35



WOMEN'S FASHION LEGGINGS
SIZES: XS-XL

ALSO FOR KIDS

TEAR-OUT LABEL

STRETCH

NEW SK427
PAGE 35



WOMEN'S FASHION CYCLING SHORTS
SIZES: XS-XL

ALSO FOR KIDS

TEAR-OUT LABEL

STRETCH

SK436
PAGE 29



WOMEN'S FASHION BRIEFS
SIZES: XS-L

TEAR-OUT LABEL

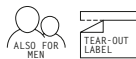
STRETCH

SK440

PAGE 39



WOMEN'S FASHION POLO
SIZES: XS-XL



SK513

PAGE 48



WOMEN'S SLOUNGE SWEAT
SIZES: S-XL



SK515

PAGE 49



WOMEN'S CROPPED SLOUNGE SWEAT
SIZES: XS-XL



NEW

SK516

PAGE 49



WOMEN'S CROPPED SLOUNGE HOODY
SIZES: XS-XL



SK600

PAGES 36-37



WOMEN'S STRETCH SKINNI JEANS
SIZES: W26"/UK 8/EUR 36 -
W36"/UK 18/EUR 46
REG + LONG LENGTHS



SM016

PAGE 62



KIDS' TANK VEST
SIZES (YEARS):
4-6, 7-9, 10-12



SM062

PAGE 62



KIDS' SHORTS
SIZES (YEARS): 5-6, 7-8, 9-10,
11-12



SM064

PAGE 62



KIDS' LEGGINGS
SIZES (YEARS): 3-4, 5-6, 7-8,
9-12, 11-12



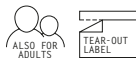
S F M I N N I

SM069

PAGE 63



KIDS' RETRO SHORTS
SIZES (YEARS): 5-6, 7-8, 9-10,
11-12

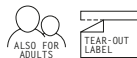


SM083

PAGE 54



KIDS' TARTAN LOUNGE PANTS
SIZES (YEARS): 5-6, 7-8, 9-10,
11-12, 13



SM121

PAGES 59



KIDS' FEEL GOOD STRETCH T
SIZES (YEARS): 3-4, 5-6, 7-8,
9-10, 11-12



SM123

PAGE 59



KIDS' FEEL GOOD STRETCH VEST
SIZES (YEARS): 5-6, 7-8, 9-10,
11-12

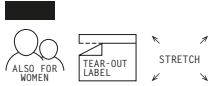


NEW

SM126
PAGE 58



KIDS' FEEL GOOD STRETCH SPAGHETTI VEST
SIZES (YEARS): 5-6, 7-8, 9-10, 11-12



SM127
PAGE 58



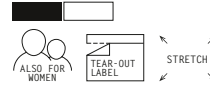
KIDS' FEEL GOOD STRETCH CONTRAST STRAPPY VEST
SIZES (YEARS): 5-6, 7-8, 9-10, 11-12



SM170
PAGE 62



KIDS' HIGH NECK CROP VEST
SIZES (YEARS): 5-6, 7-8, 9-10, 11-12



SM202
PAGE 65



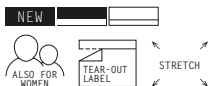
KIDS' STRIPED T
SIZES (YEARS): 5-6, 7-8, 9-10, 11-12



SM236
PAGE 61



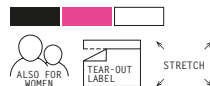
KIDS' FASHION CROP TOP
SIZES (YEARS): 5-6, 7-8, 9-10, 11-12



SM241
PAGE 60



KIDS' FASHION WORKOUT VEST
SIZES (YEARS): 5-6, 7-8, 9-10, 11-12



SM258
PAGE 64



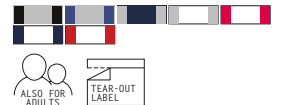
KIDS' LONGLINE T WITH DIPPED HEM
SIZES (YEARS): 5-6, 7-8, 9-10, 11-12



SM271
PAGE 66



KIDS' LONG SLEEVED BASEBALL T
SIZES (YEARS): 5-6, 7-8, 9-10, 11-12

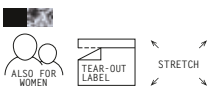


SM424
PAGE 60



REVERSIBLE

KIDS' REVERSIBLE WORKOUT LEGGINGS
SIZES (YEARS): 5-6, 7-8, 9-10, 11-12



SM425
PAGE 68



KIDS' SLIM FIT CUFFED JOGGERS
SIZES (YEARS): 5-6, 7-8, 9-10, 11-12



NEW

SM426
PAGE 61



KIDS' FASHION LEGGINGS
SIZES (YEARS): 5-6, 7-8, 9-10, 11-12



NEW

SM427
PAGE 61



KIDS' FASHION CYCLING SHORTS
SIZES (YEARS): 5-6, 7-8, 9-10, 11-12



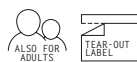
SM470

PAGES
52 + 69



KIDS' ALL-IN-ONE

SIZES (YEARS): 3-4, 5-6, 7-8,
9-10, 11-12, 13



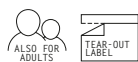
SM514

PAGE 67



KIDS' DROP SHOULDER SLOGAN TOP

SIZES (YEARS): 5-6, 7-8, 9-10,
11-12



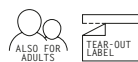
SM526

PAGE 68



KIDS' SLIM FIT ZIP-THROUGH

HOODY
SIZES (YEARS): 5-6, 7-8, 9-10,
11-12



SF123 MEN'S FEEL GOOD STRETCH VEST (PAGE 12)
SK121 WOMEN'S FEEL GOOD STRETCH T (PAGE 9)



COLOUR GUIDE

BABY PINK PMS 517C	BLACK	BRIGHT PINK PMS 204C	BRIGHT RED / RED PMS 186C	BURGUNDY PMS 7428C
CLAY PMS 7524U	CORAL PMS 1625C	DEEP PURPLE PMS 669C	DUSKY PINK PMS 681C	FUCHSIA PMS 226C
GREEN PMS 355C	HEATHER BLUE PMS 2727C	HEATHER CHARCOAL PMS COOL GRAY 10 C	HEATHER GREY 34% BLACK	HEATHER NAVY PMS 432C
HEATHER PINK PMS 682C	HEATHER PURPLE PMS 668C	HEATHER RED PMS 201C	HOT PINK PMS 1925C	KHAKI PMS 5615U
LIGHT STONE PMS 7527U	NAVY PMS 533C	NEON PINK PMS 806C	OFF WHITE	OXFORD NAVY PMS 2767C
OXFORD NAVY MARL PMS 289C	PURPLE PMS 2617C	ROYAL PMS 280U	SAPPHIRE PMS 640C	STONE BLUE PMS 5415C
SURF BLUE PMS 305C	WASHED BLACK PMS 426C	WHITE	YELLOW (SF121/SK121) PMS 115C	YELLOW (SK069 TRIM) PMS 121C
NAVY/GREEN CHECK PMS 655C/349C/BLACK	RED/NAVY CHECK PMS 533C/200C/WHITE	WHITE/PINK CHECK PMS 655C/204C/WHITE	WHITE/MULTI CHECK PMS 655C/280C/WHITE	BLACK PRINT PMS 428C/877C/426C
BURGUNDY CHECK PMS 7428C/533C	LIGHT GREY CHECK PMS 7544U/533C	NAVY CHECK PMS 533C/COOL GRAY 10 C		



 SF-CLOTHING.COM

 SF.PROMO.CLOTHING

 SFSKINIFIT

 SFSKINIFIT

 SFSKINIFITCLOTHING



CARBON LOGO HERE

